

# Fact Book

## Academic Year 2014-2015



COLORADO COMMUNITY  
COLLEGE SYSTEM

**Produced by the Office of Institutional Research**

**Issued April 2016**

## Table of Contents

<b>SYSTEM HIGHLIGHTS.....</b>	<b>3</b>
<b>INTRODUCTION .....</b>	<b>4</b>
<b>SUMMARY DATA – FALL 2014 AND ANNUAL 2014-15.....</b>	<b>5</b>
<b>DEMOGRAPHICS .....</b>	<b>7</b>
HEADCOUNT AND FTE BY COLLEGE: 2014-15 .....	7
ANNUAL HEADCOUNT ENROLLMENT: 2005-06 AND 2010-11 TO 2014-15 .....	8
ANNUAL FTE ENROLLMENT: 2005-06 AND 2010-11 TO 2014-15.....	9
HEADCOUNT RESIDENCY BY TYPE AND BY COLLEGE: 2014-15 .....	10
FTE RESIDENCY BY TYPE AND BY COLLEGE: 2014-15 .....	10
FALL HEADCOUNT ENROLLMENT: 2010 TO 2014.....	11
FALL FTE ENROLLMENT: 2010 TO 2014 .....	11
HEADCOUNT BY FULL AND PART-TIME STATUS BY COLLEGE: 2014-15.....	12
PERCENTAGE OF HEADCOUNT BY ETHNICITY BY COLLEGE: 2014-15.....	13
PERCENT OF HEADCOUNT BY AGE GROUP BY COLLEGE: 2014-15 .....	14
HEADCOUNT BY GENDER BY COLLEGE: 2014-15.....	15
HEADCOUNT OF MILITARY-RELATED STUDENTS: 2014-15.....	16
HEADCOUNT BY DEGREE-SEEKING TYPE BY COLLEGE: 2014-15 .....	17
PARENTAL EDUCATION LEVEL .....	18
<b>RETENTION .....</b>	<b>19</b>
FALL-TO-FALL FULL- AND PART-TIME RETENTION TRENDS BY COLLEGE.....	19
<b>DEGREES .....</b>	<b>20</b>
DEGREES AWARDED BY TYPE OF AWARD: 2014-15.....	20
DEGREES AWARDED BY COLLEGE: 2014-15 .....	21
TOP DEGREE PROGRAM BY COLLEGE: 2014-15.....	22
TOP DEGREE PROGRAMS FOR CCCS BY TYPE OF DEGREE: 2014-15 .....	22
DEGREES WITH DESIGNATION AWARDED: 2012-13 THROUGH 2014-15 .....	23
<b>TRANSFERS .....</b>	<b>24</b>
TOTAL NUMBER OF STUDENT TRANSFERS AND TOP TRANSFER DESTINATIONS.....	24
TOP FIVE FOUR-YEAR TRANSFER DESTINATIONS.....	25
TRANSFERS TO COLORADO FOUR-YEAR INSTITUTIONS: FALL 2014 TO FALL 2015 .....	26
TOP FIVE FOUR-YEAR PRIVATE TRANSFER DESTINATIONS.....	27
<b>GRADUATION AND GRADUATION/TRANSFER RATES.....</b>	<b>28</b>
THREE-YEAR GRADUATION AND TRANSFER RATE.....	28
THREE-YEAR GRADUATION RATE TRENDS .....	29
THREE-YEAR GRADUATION RATE TRENDS: MINORITY STUDENTS.....	30
THREE-YEAR COMBINED GRADUATION AND TRANSFER RATE .....	31

<b>DEVELOPMENTAL EDUCATION.....</b>	<b>32</b>
DEVELOPMENTAL COURSE COMPLETION RATES BY SUBJECT .....	32
DEVELOPMENTAL EDUCATION COURSE COMPLETION RATES BY COLLEGE – ALL SUBJECTS .....	33
PERCENT OF STUDENTS ENROLLED IN DEVELOPMENTAL COURSES BY COLLEGE .....	33
PERCENT OF FTE STUDENTS ENROLLED IN DEVELOPMENTAL COURSES BY COLLEGE.....	34
<b>CONCURRENT ENROLLMENT.....</b>	<b>35</b>
HIGH SCHOOL STUDENTS ATTENDING CCCS COLLEGES BY COLLEGE.....	35
<b>FACULTY .....</b>	<b>36</b>
PROPORTION OF CREDIT HOURS TAUGHT BY STAFF CLASSIFICATION: 2014-15 .....	36
<b>GLOSSARY OF TERMS.....</b>	<b>37</b>

## System Highlights

This report provides data on enrollment, retention, degrees awarded, developmental education, and high school (Concurrent) enrollment for the thirteen colleges of the Colorado Community College System (CCCS). Those colleges are:

### Colorado Community College System Colleges

Arapahoe Community College	Northeastern Junior College
Colorado Northwestern Community College	Otero Junior College
Community College of Aurora	Pikes Peak Community College
Community College of Denver	Pueblo Community College
Front Range Community College	Red Rocks Community College
Lamar Community College	Trinidad State Junior College
Morgan Community College	

- **Enrollment** – Across the system, annual unduplicated undergraduate enrollment decreased 5.5 percent, from 134,324 to 126,963. Likewise, full-time equivalent enrollment (FTE) declined from 56,083.0 to 53,013.4, a 5.5 percent decrease. In addition to the undergraduate population, CCCS trains more than 17,000 Coloradans each year through various other programs. CCCS is the largest higher education system in the state.
- **Fall to Fall Retention** – The overall retention rate of full and part-time students increased from 47.8 percent to 48.6 percent.
- **Degrees Awarded** - CCCS colleges awarded 18,074 credentials in AY 2014-15, an increase of 5.7 percent over the AY 2013-14 level of 17,099.
- **Graduation Rate** - The graduation rate for first-time, full-time, degree-seeking students was 20.6 percent, an increase from 20.4 percent in AY 2013-14.
- **Developmental Education** - The proportion of students enrolled in remedial courses dropped from 22.9 percent in AY 2013-14 to 19.3 percent in AY 2014-15, while the proportion of FTE dropped from 10.7 percent to 8.1 percent. The overall system remedial completion rate increased from 68.2 percent to 69.4 percent.
- **High School Student Enrollment** – High school students attending CCCS colleges increased 8.6 percent, from 18,885 to 20,505. Over the last five years, the number of high school students attending CCCS colleges increased 63.2 percent.
- **Student Diversity** – Minority students comprise 34.6 percent of the student population. Forty-four percent of the student population is nontraditional in that they are at least 25 years of age. Three-quarters of CCCS students attend college part time.
- **Transfers** – 11,049 students, or 13.5 percent of the Fall 2014 cohort, transferred to a four-year college in Fall 2015.

## Introduction

This fact book provides various student data for the thirteen colleges of the Colorado Community College System (CCCS). It is intended to be a one-stop resource for information. The Office of Institutional Research at the system office produces this report. Additional information about some of the subjects in this document, as well as previous year's fact books, can be found at <https://www.cccs.edu/about-cccs/institutional-research/>.

The data in this report are in tabular and/or graphic format. Data are from the Colorado Student Unit Record Data System (SURDS) or other data reported to the Colorado Department of Higher Education (CDHE), the federal Integrated Postsecondary Education Data System (IPEDS), or the National Student Clearinghouse (NSC). As SURDS and other reports submitted to CDHE are the predominant sources of data, a data source is indicated only if they are not the data source.

A Glossary of Terms is also included at the end of the document that provides additional descriptions and definitions to assist the reader.

## Summary Data – Fall 2014 and Annual 2014-15

<u>Data Element</u>	<u>Fall 2014</u>		<u>Annual</u>	
	<u>Headcount</u>	<u>FTE</u>	<u>Headcount</u>	<u>FTE</u>
Resident	77,771	22,464.0	114,600	49,999.5
Non-Resident	6,383	1,348.9	12,359	3,014.0
Unknown*	0	0.0	4	0.0
<b>Total</b>	<b>84,154</b>	<b>23,812.8</b>	<b>126,963</b>	<b>53,013.4</b>

\*Headcount and FTE data are derived from two different data submittals to CDHE, explaining the fact that the residency of some students is not known for headcount figures but is available for the FTE count.

<u>Demographics</u>	<u>Headcount</u>	<u>% of Total</u>	<u>Headcount</u>	<u>% of Total</u>
Minority	27,351	34.6%	41,194	34.6%
Female	47,363	56.3%	69,998	55.2%
Average Age	26		27	

<u>Enrollment Characteristics</u>	<u>Count</u>	<u>% of Total</u>	<u>Count</u>	<u>% of Total</u>
First Time Students	11,617	13.8%	18,751	14.8%
Transfer Students	9,374	11.1%	19,675	15.5%
Continuing Students	49,849	59.2%	67,725	53.3%
High School Students	13,314	15.8%	20,505	16.2%
Unknown	0	0.0%	307	0.2%
<b>Total</b>	<b>84,154</b>	<b>100.0%</b>	<b>126,963</b>	<b>100.0%</b>

<u>Headcount by Degree Type</u>	<u>Count</u>	<u>% of Total</u>	<u>Count</u>	<u>% of Total</u>
Associate of Arts (AA)	21,000	25.0%	28,812	22.7%
Associate of Science (AS)	17,098	20.3%	24,888	19.6%
Associate of Applied Science (AAS)	19,483	23.2%	26,479	20.9%
Associate of General Studies (AGS)	8,427	10.0%	11,957	9.4%
Certificate	6,343	7.5%	11,878	9.4%
Non-degree/Unknown	11,803	14.0%	22,949	18.1%
<b>Total</b>	<b>84,154</b>	<b>100.0%</b>	<b>126,963</b>	<b>100.0%</b>

Average Class Size\* 17 17

\*Excludes online courses and those with less than 6 enrollments.

<u>Degrees Awarded: 2014-15</u>	<u>Headcount</u>	<u>% of Total</u>
AA	2,388	13.2%
AS	897	5.0%
AAS	2,978	16.5%
AGS	1,162	6.4%
2-yr Certificate	1,803	10.0%
1-yr Certificate	8,846	48.9%
<b>Total</b>	<b>18,074</b>	<b>100.0%</b>

<u>Outcomes</u>	<u>Headcount</u>	<u>% of Total</u>
Fall 2013 to Fall 2014 Retained or Completed		48.6%
Three-Year Graduation Rate (Based on Fall 2011 cohort)		20.6%
Transfers to 4-year colleges in Fall 2015	11,049	13.5%
Remedial Completion Rate (AY 2014-15)		69.4%

Tuition: 2014-15\*

Annual Full-time Resident Tuition	\$3,747.00
Annual Full-time Non-Resident Tuition:	
ACC, CCA, CCD, FRCC, MCC, PCC, PPCC, RRCC	\$15,371
CNCC, LCC, NJC,OJC, TSJC	\$6,704

\*Based on 30 credit hours; non-resident tuition may be lower based on a student's state of residence.

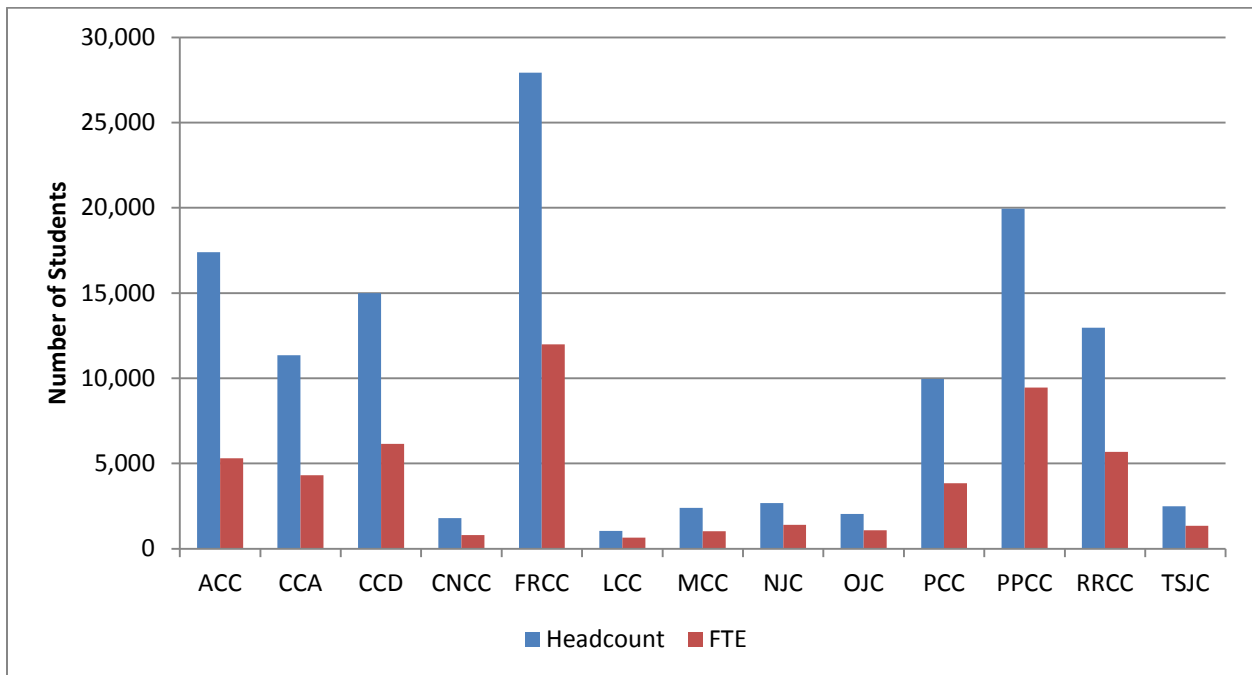
Accessibility

Percentage of courses offered online, hybrid, evenings, or weekend	49.4%
--	-------

## Demographics

### Headcount and FTE by College: 2014-15

College	Headcount	Percent of Total Headcount	FTE	Percent of Total FTE
ACC	17,403	13.7%	5,298.1	10.0%
CCA	11,355	8.9%	4,307.9	8.1%
CCD	14,988	11.8%	6,141.2	11.6%
CNCC	1,786	1.4%	807.3	1.5%
FRCC	27,925	22.0%	11,980.8	22.6%
LCC	1,040	0.8%	646.9	1.2%
MCC	2,402	1.9%	1,026.7	1.9%
NJC	2,668	2.1%	1,404.1	2.6%
OJC	2,043	1.6%	1,088.9	2.1%
PCC	9,960	7.8%	3,848.4	7.3%
PPCC	19,939	15.7%	9,454.8	17.8%
RRCC	12,964	10.2%	5,672.1	10.7%
TSJC	2,490	2.0%	1,336.0	2.5%
<b>CCCS Total</b>	<b>126,963</b>	<b>100.0%</b>	<b>53,013.4</b>	<b>100.0%</b>

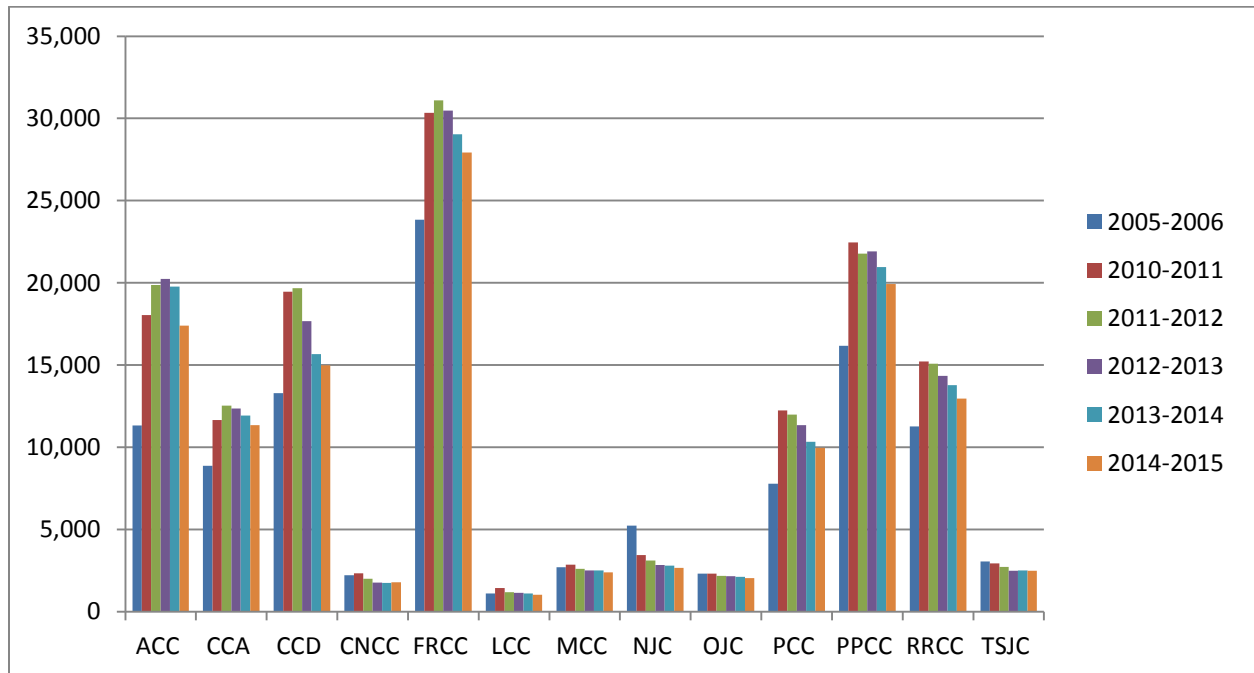




**Annual Headcount Enrollment: 2005-06 and 2010-11 to 2014-15**

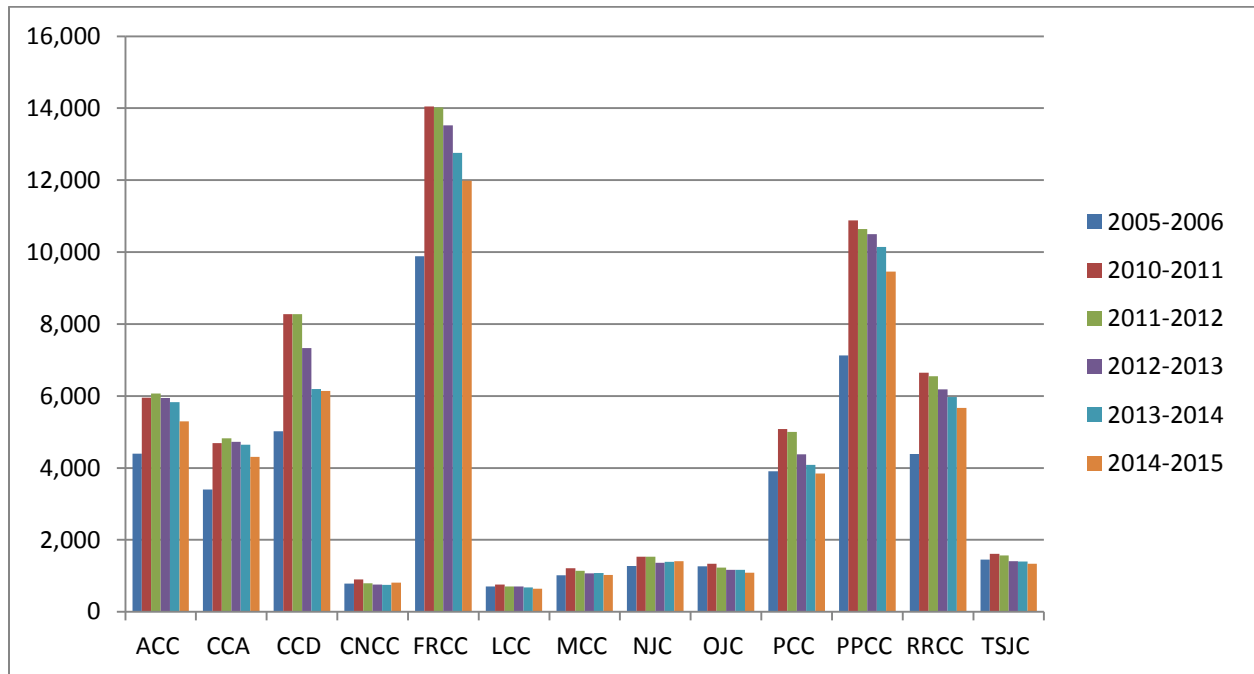
College	2005-2006	2010-2011	2011-2012	2012-2013	2013-2014	2014-2015	Five-Year % Change	Ten-Year % Change
ACC	11,337	18,036	19,881	20,246	19,775	17,403	-3.5%	53.5%
CCA	8,873	11,663	12,533	12,357	11,935	11,355	-2.6%	28.0%
CCD	13,294	19,455	19,682	17,672	15,669	14,988	-23.0%	12.7%
CNCC	2,214	2,341	2,009	1,776	1,751	1,786	-23.7%	-19.3%
FRCC	23,832	30,331	31,103	30,485	29,044	27,925	-7.9%	17.2%
LCC	1,110	1,437	1,195	1,151	1,109	1,040	-27.6%	-6.3%
MCC	2,701	2,865	2,620	2,518	2,520	2,402	-16.2%	-11.1%
NJC	5,246	3,451	3,113	2,849	2,806	2,668	-22.7%	-49.1%
OJC	2,313	2,321	2,177	2,156	2,121	2,043	-12.0%	-11.7%
PCC	7,789	12,245	11,995	11,345	10,331	9,960	-18.7%	27.9%
PPCC	16,168	22,462	21,782	21,922	20,962	19,939	-11.2%	23.3%
RRCC	11,263	15,229	15,090	14,352	13,787	12,964	-14.9%	15.1%
TSJC	3,050	2,947	2,730	2,501	2,514	2,490	-15.5%	-18.4%
<b>CCCS Total</b>	<b>109,190</b>	<b>144,783</b>	<b>145,910</b>	<b>141,330</b>	<b>134,324</b>	<b>126,963</b>	<b>-12.3%</b>	<b>16.3%</b>

\*ACC's 2005-2006 count does not include NCTI students; CNCC's 2005-2006 count does not include summer term.



**Annual FTE Enrollment: 2005-06 and 2010-11 to 2014-15**

College	2005-2006	2010-2011	2011-2012	2012-2013	2013-2014	2014-2015	Five-Year % Change	Ten-Year % Change
ACC	4,398.1	5,949.3	6,066.9	5,942.0	5,826.1	5,298.1	-10.9%	20.5%
CCA	3,401.1	4,693.2	4,819.4	4,729.7	4,644.4	4,307.9	-8.2%	26.7%
CCD	5,022.0	8,273.0	8,277.2	7,328.7	6,195.1	6,141.2	-25.8%	22.3%
CNCC	782.9	902.8	795.9	756.6	752.2	807.3	-10.6%	3.1%
FRCC	9,883.9	14,051.4	14,024.5	13,525.9	12,759.2	11,980.8	-14.7%	21.2%
LCC	704.6	762.6	705.5	706.9	679.2	646.9	-15.2%	-8.2%
MCC	1,020.0	1,209.7	1,136.4	1,069.4	1,077.1	1,026.7	-15.1%	0.7%
NJC	1,274.7	1,531.2	1,528.9	1,366.3	1,387.7	1,404.1	-8.3%	10.2%
OJC	1,261.9	1,338.8	1,225.9	1,167.6	1,163.1	1,088.9	-18.7%	-13.7%
PCC	3,904.9	5,082.5	5,004.8	4,377.0	4,082.2	3,848.4	-24.3%	-1.4%
PPCC	7,128.8	10,882.0	10,640.7	10,500.0	10,146.5	9,454.8	-13.1%	32.6%
RRCC	4,387.0	6,649.8	6,545.6	6,185.9	5,971.0	5,672.1	-14.7%	29.3%
TSJC	1,448.0	1,614.0	1,568.8	1,407.6	1,399.3	1,336.0	-17.2%	-7.7%
<b>CCCS Total</b>	<b>44,617.9</b>	<b>62,940.2</b>	<b>62,340.7</b>	<b>59,063.7</b>	<b>56,083.0</b>	<b>53,013.4</b>	<b>-15.8%</b>	<b>18.8%</b>



**Headcount Residency by Type and by College: 2014-15**

College	Resident		Non-Resident		Total	
	Headcount	Percentage	Headcount	Percentage	Headcount	% of CCCS Total
ACC	13,959	80.2%	3,444	19.8%	17,403	13.7%
CCA	10,993	96.8%	362	3.2%	11,355	8.9%
CCD	13,777	91.9%	1,211	8.1%	14,988	11.8%
CNCC	1,530	85.7%	256	14.3%	1,786	1.4%
FRCC	25,808	92.4%	2,114	7.6%	27,922	22.0%
LCC	909	87.4%	131	12.6%	1,040	0.8%
MCC	2,355	98.1%	46	1.9%	2,401	1.9%
NJC	2,448	91.8%	220	8.2%	2,668	2.1%
OJC	1,881	92.1%	162	7.9%	2,043	1.6%
PCC	7,357	73.9%	2,603	26.1%	9,960	7.8%
PPCC	19,179	96.2%	760	3.8%	19,939	15.7%
RRCC	12,304	94.9%	660	5.1%	12,964	10.2%
TSJC	2,100	84.3%	390	15.7%	2,490	2.0%
<b>CCCS Total*</b>	<b>114,600</b>	<b>90.3%</b>	<b>12,359</b>	<b>9.7%</b>	<b>126,959</b>	<b>100.0%</b>

\*The total headcount does not sum to 126,963 because 4 student records did not contain residency information.

**FTE Residency by Type and by College: 2014-15**

College	Resident		Non-Resident		Total	
	FTE	Percentage	FTE	Percentage	FTE	% of CCCS Total
ACC	5,074.7	95.8%	223.5	4.2%	5,298.1	10.0%
CCA	4,155.3	96.5%	152.6	3.5%	4,307.9	8.1%
CCD	5,604.0	91.3%	537.2	8.7%	6,141.2	11.6%
CNCC	647.1	80.2%	160.2	19.8%	807.3	1.5%
FRCC	11,165.3	93.2%	815.5	6.8%	11,980.8	22.6%
LCC	566.6	87.6%	80.3	12.4%	646.9	1.2%
MCC	1,009.8	98.4%	16.9	1.6%	1,026.7	1.9%
NJC	1,303.1	92.8%	101.0	7.2%	1,404.1	2.6%
OJC	959.3	88.1%	129.6	11.9%	1,088.9	2.1%
PCC	3,753.6	97.5%	94.8	2.5%	3,848.4	7.3%
PPCC	9,168.3	97.0%	286.5	3.0%	9,454.8	17.8%
RRCC	5,407.4	95.3%	264.7	4.7%	5,672.1	10.7%
TSJC	1,184.9	88.7%	151.1	11.3%	1,336.0	2.5%
<b>CCCS Total</b>	<b>49,999.5</b>	<b>94.3%</b>	<b>3,014.0</b>	<b>5.7%</b>	<b>53,013.4</b>	<b>100.0%</b>

**Fall Headcount Enrollment: 2010 to 2014**

<b>College</b>	<b>2010</b>	<b>2011</b>	<b>2012</b>	<b>2013</b>	<b>2014</b>	<b>Five-Yr. Change</b>
ACC	9,961	11,097	11,806	11,539	10,404	4.4%
CCA	7,644	7,824	7,908	7,874	7,617	-0.4%
CCD	12,901	13,053	11,901	10,432	10,296	-20.2%
CNCC	1,450	1,301	1,158	1,138	1,145	-21.0%
FRCC	20,092	20,568	20,527	19,619	18,761	-6.6%
LCC	1,051	935	916	905	839	-20.2%
MCC	1,965	1,885	1,839	1,851	1,837	-6.5%
NJC	2,214	2,154	1,971	1,962	1,776	-19.8%
OJC	1,823	1,546	1,456	1,449	1,434	-21.3%
PCC	7,943	8,055	7,432	6,718	6,203	-21.9%
PPCC	15,299	14,725	15,175	14,634	13,947	-8.8%
RRCC	9,826	9,544	9,031	8,600	8,112	-17.4%
TSJC	1,916	1,839	1,691	1,791	1,783	-6.9%
<b>CCCS Total</b>	<b>94,085</b>	<b>94,526</b>	<b>92,811</b>	<b>88,512</b>	<b>84,154</b>	<b>-10.6%</b>

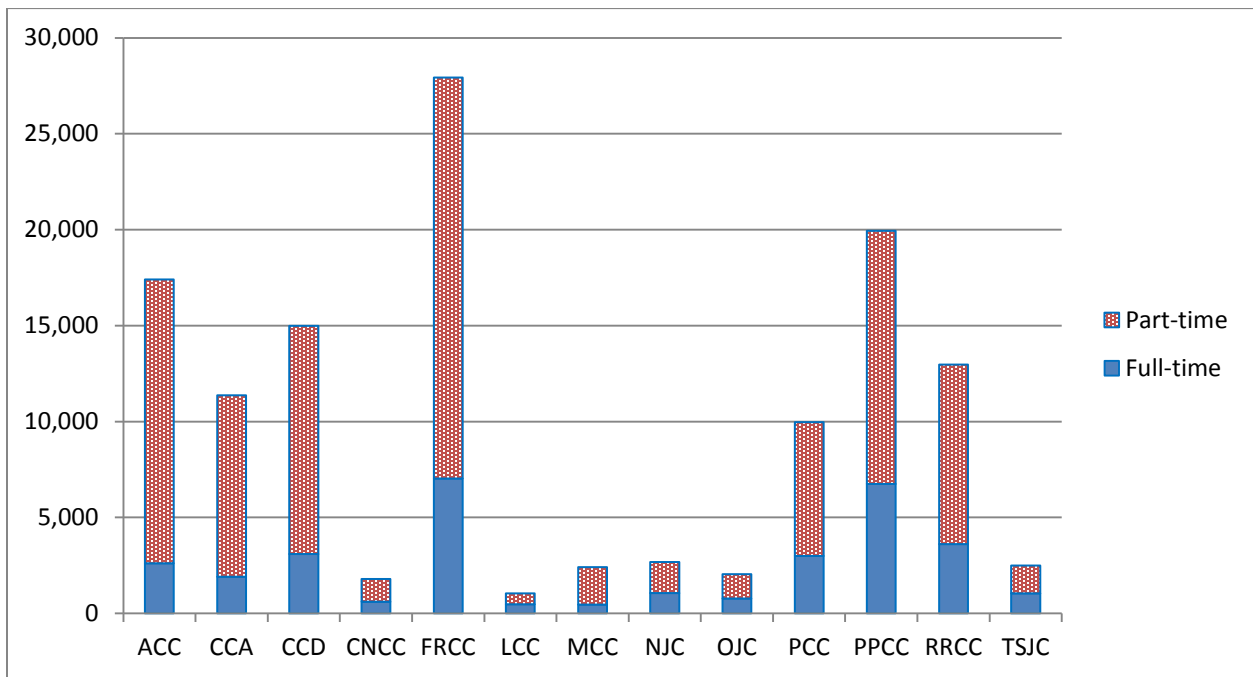
**Fall FTE Enrollment: 2010 to 2014**

<b>College</b>	<b>2010</b>	<b>2011</b>	<b>2012</b>	<b>2013</b>	<b>2014</b>	<b>Five-Yr. Change</b>
ACC	2,549.1	2,652.8	2,592.1	2,521.6	2,335.5	-8.4%
CCA	2,025.7	2,024.0	2,034.4	2,015.8	1,910.6	-5.7%
CCD	3,653.2	3,516.5	3,258.4	2,803.1	2,840.7	-22.2%
CNCC	409.5	376.6	367.6	353.5	371.6	-9.3%
FRCC	6,108.0	6,069.9	6,010.0	5,671.3	5,334.9	-12.7%
LCC	349.7	334.6	341.3	335.9	314.3	-10.1%
MCC	534.5	508.9	484.9	488.8	473.4	-11.4%
NJC	737.4	744.7	671.3	659.5	681.4	-7.6%
OJC	668.3	570.8	521.7	528.9	507.2	-24.1%
PCC	2,231.9	2,211.0	1,968.2	1,889.6	1,758.9	-21.2%
PPCC	4,765.5	4,613.8	4,689.6	4,539.3	4,224.6	-11.4%
RRCC	2,921.1	2,803.1	2,648.1	2,520.4	2,436.7	-16.6%
TSJC	719.2	695.1	633.9	654.2	623.1	-13.4%
<b>CCCS Total</b>	<b>27,673.1</b>	<b>27,121.9</b>	<b>26,221.4</b>	<b>24,982.0</b>	<b>23,812.8</b>	<b>-13.9%</b>

### Headcount by Full and Part-Time Status by College: 2014-15

College	Full Time		Part Time		Total	
	Headcount	Percentage	Headcount	Percentage	Headcount	% of Total
ACC	2,607	15.0%	14,793	85.0%	17,400	13.7%
CCA	1,911	16.8%	9,444	83.2%	11,355	8.9%
CCD	3,091	20.6%	11,897	79.4%	14,988	11.8%
CNCC	601	33.7%	1,185	66.3%	1,786	1.4%
FRCC	7,020	25.1%	20,905	74.9%	27,925	22.0%
LCC	475	45.7%	565	54.3%	1,040	0.8%
MCC	458	19.1%	1,944	80.9%	2,402	1.9%
NJC	1,054	39.5%	1,612	60.5%	2,666	2.1%
OJC	772	37.8%	1,271	62.2%	2,043	1.6%
PCC	2,985	30.0%	6,975	70.0%	9,960	7.8%
PPCC	6,737	33.8%	13,202	66.2%	19,939	15.7%
RRCC	3,613	27.9%	9,351	72.1%	12,964	10.2%
TSJC	1,038	41.7%	1,452	58.3%	2,490	2.0%
<b>CCCS Total</b>	<b>32,362</b>	<b>25.5%</b>	<b>94,596</b>	<b>74.5%</b>	<b>126,958</b>	<b>100.0%</b>

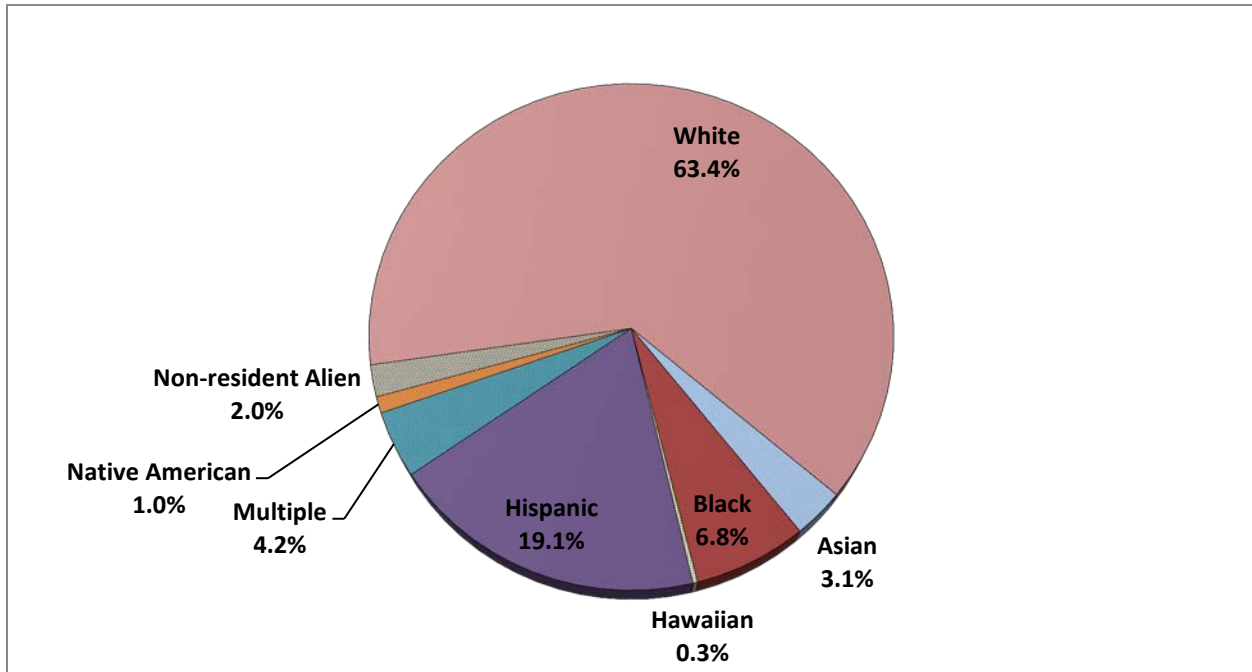
\*FT/PT status is based on the number of credit hours a student took during his or her first term in the academic year, with the exception of summer, unless a student was only enrolled in the summer term.



**Percentage of Headcount by Ethnicity by College: 2014-15**

College	Asian	Black or African American	Hawaiian or Pacific Islander	Hispanic	More than one Race/ Ethnicity (non-Hispanic)	Native American or Alaska Native	Non-resident Alien	White	Total Minority
ACC	3.2%	3.0%	0.3%	19.9%	3.5%	0.6%	0.9%	68.5%	30.6%
CCA	5.6%	22.5%	0.4%	21.5%	6.3%	0.5%	2.5%	40.8%	56.7%
CCD	5.5%	15.1%	0.2%	27.2%	4.8%	1.3%	6.7%	39.3%	54.1%
CNCC	0.5%	2.6%	0.3%	10.6%	3.1%	1.5%	0.7%	80.7%	18.5%
FRCC	3.5%	1.8%	0.2%	14.2%	3.7%	0.7%	2.0%	73.8%	24.2%
LCC	0.2%	4.2%	0.1%	23.2%	2.4%	1.1%	4.2%	64.7%	31.2%
MCC	0.6%	1.9%	0.1%	17.7%	1.4%	0.3%	1.1%	76.8%	22.1%
NJC	0.4%	5.8%	0.1%	10.3%	2.8%	0.7%	0.5%	79.4%	20.1%
OJC	0.8%	2.9%	0.3%	28.8%	3.2%	1.3%	3.3%	59.4%	37.3%
PCC	0.7%	5.6%	0.2%	28.7%	2.7%	3.1%	0.7%	58.3%	41.1%
PPCC	2.4%	8.5%	0.6%	14.4%	6.2%	0.9%	0.7%	66.2%	33.1%
RRCC	2.8%	1.8%	0.2%	14.0%	3.6%	0.9%	1.6%	75.1%	23.3%
TSJC	1.1%	2.2%	0.1%	43.2%	1.8%	1.5%	1.3%	48.7%	50.0%
<b>CCCS Total</b>	<b>3.1%</b>	<b>6.8%</b>	<b>0.3%</b>	<b>19.1%</b>	<b>4.2%</b>	<b>1.0%</b>	<b>2.0%</b>	<b>63.4%</b>	<b>34.6%</b>

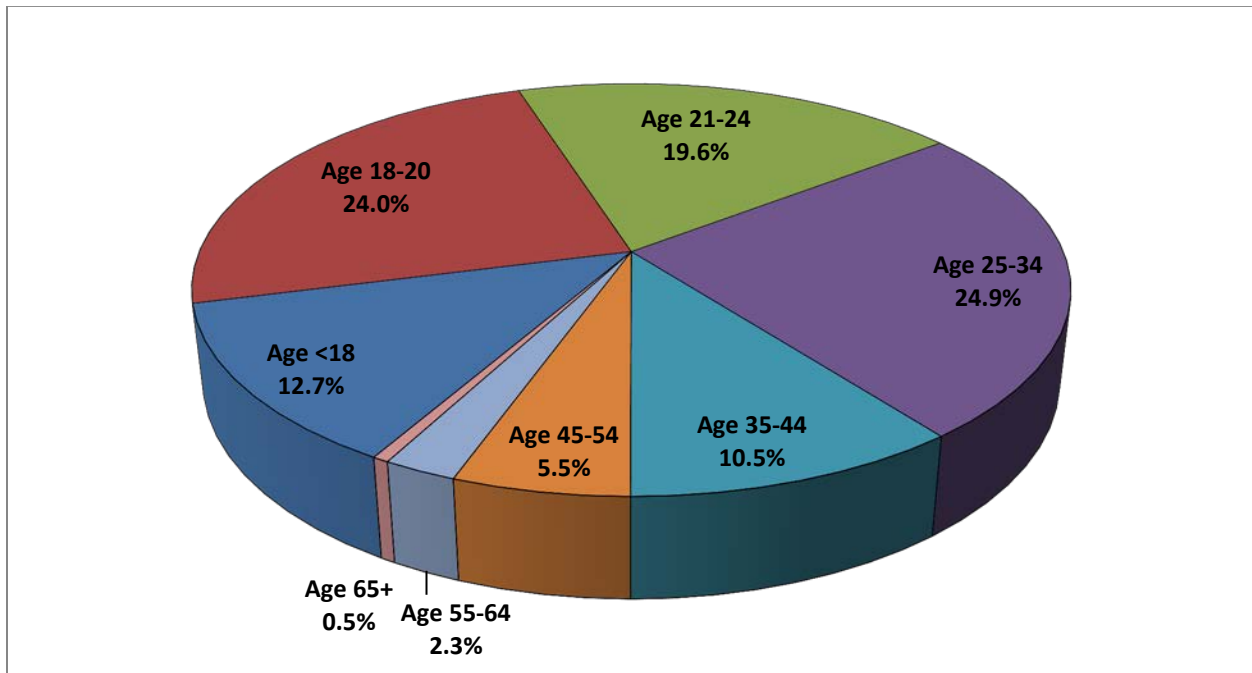
Percentages are based on reported data only; 6.1 percent of students did not report ethnicity. The minority percentage includes students reporting as Asian, black or African American, Hawaiian or Pacific Islander, Hispanic, multiple races, and Native American or Alaska Native.



**Percent of Headcount by Age Group by College: 2014-15**

College	<18	18-20	21-24	25-34	35-44	45-54	55-64	65+	Average Age	Median Age
ACC	16.9%	20.2%	15.6%	24.8%	13.2%	6.4%	2.5%	0.4%	27	24
CCA	23.0%	21.5%	16.0%	22.4%	10.3%	4.6%	1.8%	0.4%	25	22
CCD	12.4%	25.2%	23.1%	25.6%	8.2%	3.7%	1.5%	0.3%	25	22
CNCC	23.0%	24.8%	12.2%	17.8%	9.5%	6.6%	5.2%	1.0%	27	21
FRCC	9.2%	25.8%	24.4%	24.9%	9.3%	4.5%	1.6%	0.3%	26	23
LCC	25.0%	42.6%	12.2%	11.5%	4.6%	2.3%	1.3%	0.5%	22	19
MCC	25.3%	23.4%	10.8%	14.8%	8.8%	7.8%	5.8%	3.2%	28	21
NJC	10.7%	40.3%	11.2%	13.5%	8.9%	8.8%	5.3%	1.4%	28	20
OJC	23.2%	30.3%	13.3%	12.7%	7.0%	6.1%	3.9%	3.5%	27	20
PCC	8.2%	18.3%	17.2%	29.0%	15.5%	8.1%	3.0%	0.6%	29	26
PPCC	7.5%	24.1%	21.3%	29.0%	10.8%	5.3%	1.8%	0.2%	27	24
RRCC	9.5%	23.6%	20.3%	26.1%	10.4%	6.4%	3.1%	0.6%	27	24
TSJC	20.6%	30.0%	12.7%	18.0%	8.1%	6.1%	3.2%	1.2%	26	20
<b>CCCS Total</b>	<b>12.7%</b>	<b>24.0%</b>	<b>19.6%</b>	<b>24.9%</b>	<b>10.5%</b>	<b>5.5%</b>	<b>2.3%</b>	<b>0.5%</b>	<b>27</b>	<b>23</b>

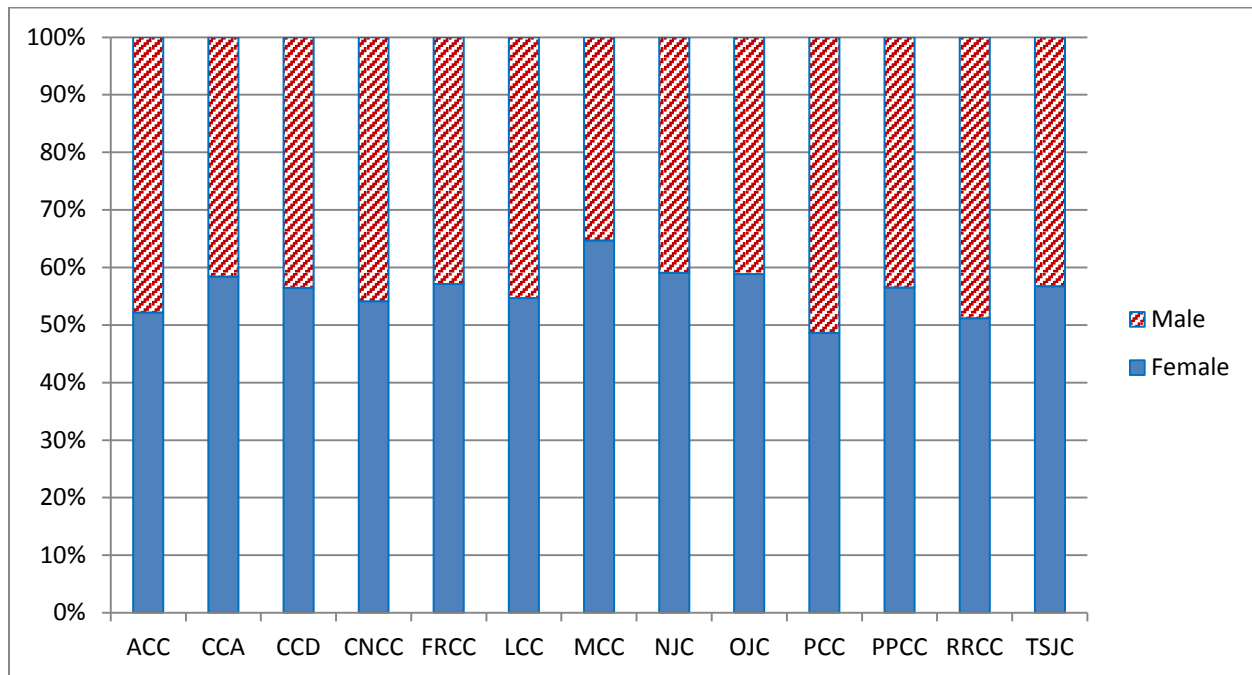
Age is calculated from December 31, 2014. Percentages are based on reported data only. A small number of students, less than 0.01 percent, did not report a birth date.



### Headcount by Gender by College: 2014-15

College	Female		Male		Total Count
	Headcount	Percentage	Headcount	Percentage	
ACC	8,982	52.2%	8,229	47.8%	17,211
CCA	6,621	58.4%	4,723	41.6%	11,344
CCD	8,455	56.4%	6,530	43.6%	14,985
CNCC	960	54.1%	814	45.9%	1,774
FRCC	15,942	57.1%	11,981	42.9%	27,923
LCC	568	54.7%	471	45.3%	1,039
MCC	1,550	64.7%	847	35.3%	2,397
NJC	1,575	59.1%	1,091	40.9%	2,666
OJC	1,202	58.8%	841	41.2%	2,043
PCC	4,836	48.6%	5,119	51.4%	9,955
PPCC	11,263	56.5%	8,675	43.5%	19,938
RRCC	6,632	51.2%	6,328	48.8%	12,960
TSJC	1,412	56.7%	1,078	43.3%	2,490
<b>CCCS Total</b>	<b>69,998</b>	<b>55.2%</b>	<b>56,727</b>	<b>44.8%</b>	<b>126,725</b>

Counts are based on reported data only. About 0.2 percent of students did not report gender.



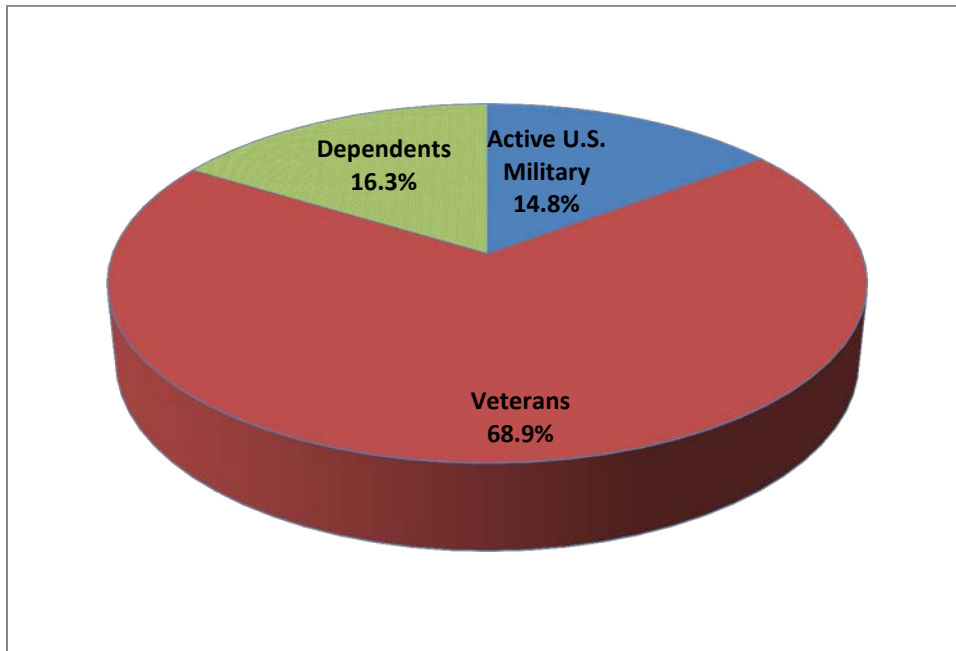


### Headcount of Military-related Students: 2014-15

College	Active U.S. Military*	Veterans	Total Military**	Dependents of Active U.S. Military	Total U.S. Military-related Students	College as Percent of Total CCCS
ACC	36	503	539	7	546	5.8%
CCA	72	438	510	33	543	5.8%
CCD	27	429	456	5	461	4.9%
CNCC	3	49	52	0	52	0.6%
FRCC	61	1,069	1,130	3	1,133	12.0%
LCC	1	24	25	0	25	0.3%
MCC	3	28	31	0	31	0.3%
NJC	7	18	25	0	25	0.3%
OJC	2	59	61	0	61	0.6%
PCC	20	402	422	34	456	4.8%
PPCC	1,134	2,742	3,876	1,457	5,333	56.5%
RRCC	29	670	699	0	699	7.4%
TSJC	3	70	73	0	73	0.8%
<b>CCCS Total</b>	<b>1,398</b>	<b>6,501</b>	<b>7,899</b>	<b>1,539</b>	<b>9,438</b>	<b>100.0%</b>

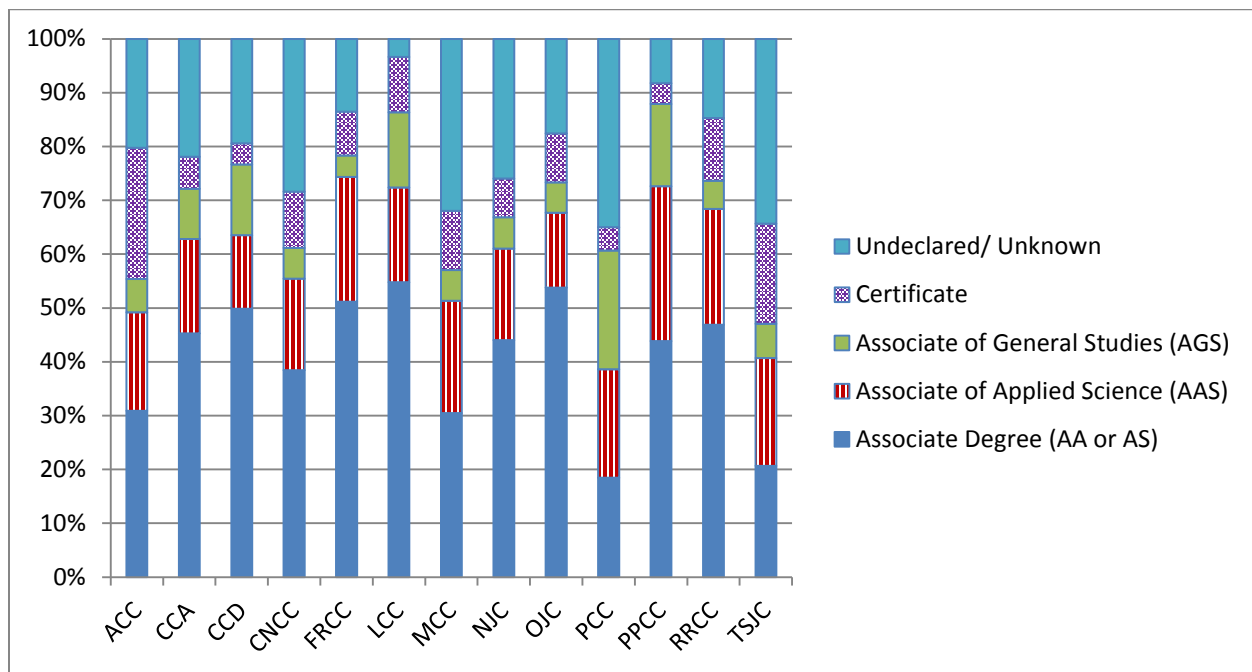
\* The active U.S. military column includes a small number (4) of U.S. military reserves and national guard.

\*\* In the course of an academic year, a student could be in multiple categories; for example, an active member of the military in one semester and a veteran in another. The hierarchical order in this chart gives precedence to active military.



### Headcount by Degree-Seeking Type by College: 2014-15

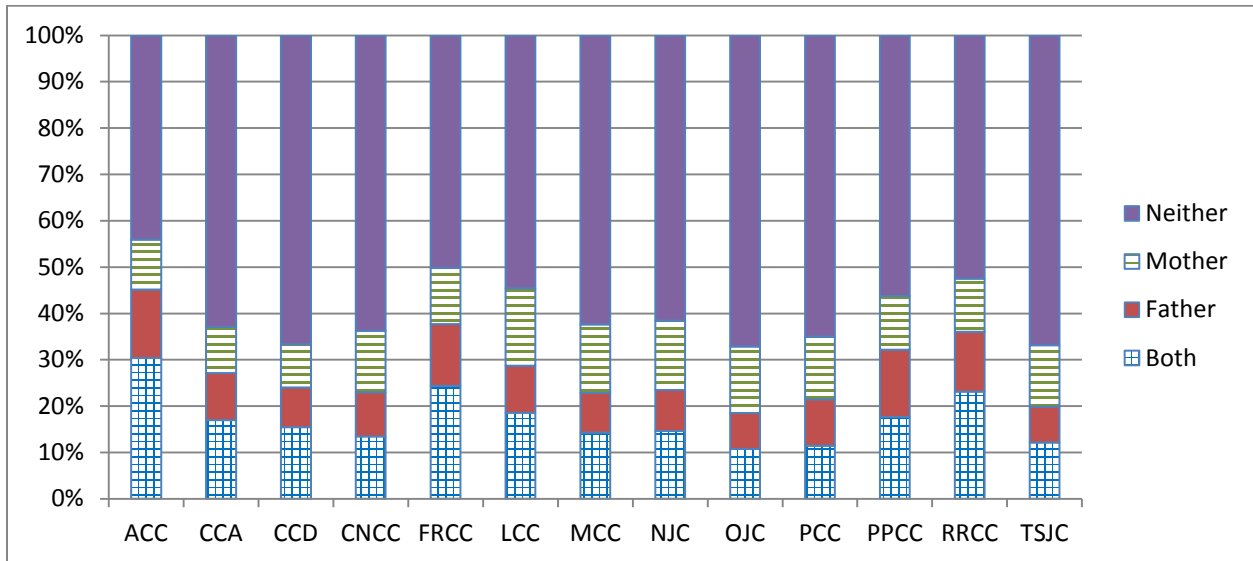
College	Associate of Arts (AA)	Associate of Science (AS)	Associate of Applied Science (AAS)	Associate of General Studies (AGS)	Certificate	Undeclared/Unknown	Total
ACC	2,742	2,629	3,187	1,082	4,238	3,525	17,403
CCA	2,453	2,687	1,990	1,063	675	2,487	11,355
CCD	3,717	3,754	2,050	1,969	589	2,909	14,988
CNCC	467	220	303	102	187	507	1,786
FRCC	8,129	6,157	6,482	1,114	2,267	3,776	27,925
LCC	325	245	183	145	107	35	1,040
MCC	411	321	501	138	263	768	2,402
NJC	758	417	454	155	191	693	2,668
OJC	692	407	284	115	186	359	2,043
PCC	1,043	794	2,007	2,201	431	3,484	9,960
PPCC	4,927	3,812	5,747	3,038	772	1,643	19,939
RRCC	2,827	3,251	2,793	676	1,509	1,908	12,964
TSJC	321	194	498	159	463	855	2,490
<b>CCCS</b>	<b>28,812</b>	<b>24,888</b>	<b>26,479</b>	<b>11,957</b>	<b>11,878</b>	<b>22,949</b>	<b>126,963</b>
<b>CCCS %</b>	<b>22.7%</b>	<b>19.6%</b>	<b>20.9%</b>	<b>9.4%</b>	<b>9.4%</b>	<b>18.1%</b>	<b>100.0%</b>



**Parental Education Level**  
**Students' Parents Who Earned a Four-Year Degree, 2014-15**

College	Both	Father	Mother	Neither
ACC	30.3%	14.8%	10.8%	44.1%
CCA	17.0%	10.1%	10.0%	62.9%
CCD	15.4%	8.6%	9.3%	66.7%
CNCC	13.4%	9.5%	13.2%	63.8%
FRCC	24.4%	13.3%	12.2%	50.2%
LCC	18.6%	10.1%	16.7%	54.6%
MCC	14.3%	8.5%	14.8%	62.4%
NJC	14.6%	8.8%	15.0%	61.5%
OJC	10.8%	7.7%	14.3%	67.2%
PCC	11.4%	10.0%	13.5%	65.0%
PPCC	17.7%	14.5%	11.6%	56.2%
RRCC	23.1%	12.9%	11.5%	52.5%
TSJC	12.1%	7.7%	13.3%	66.8%
<b>CCCS Total</b>	<b>20.3%</b>	<b>12.1%</b>	<b>11.6%</b>	<b>56.0%</b>

Source: Banner. Based on students who reported. About 3.5 percent of students did not report.

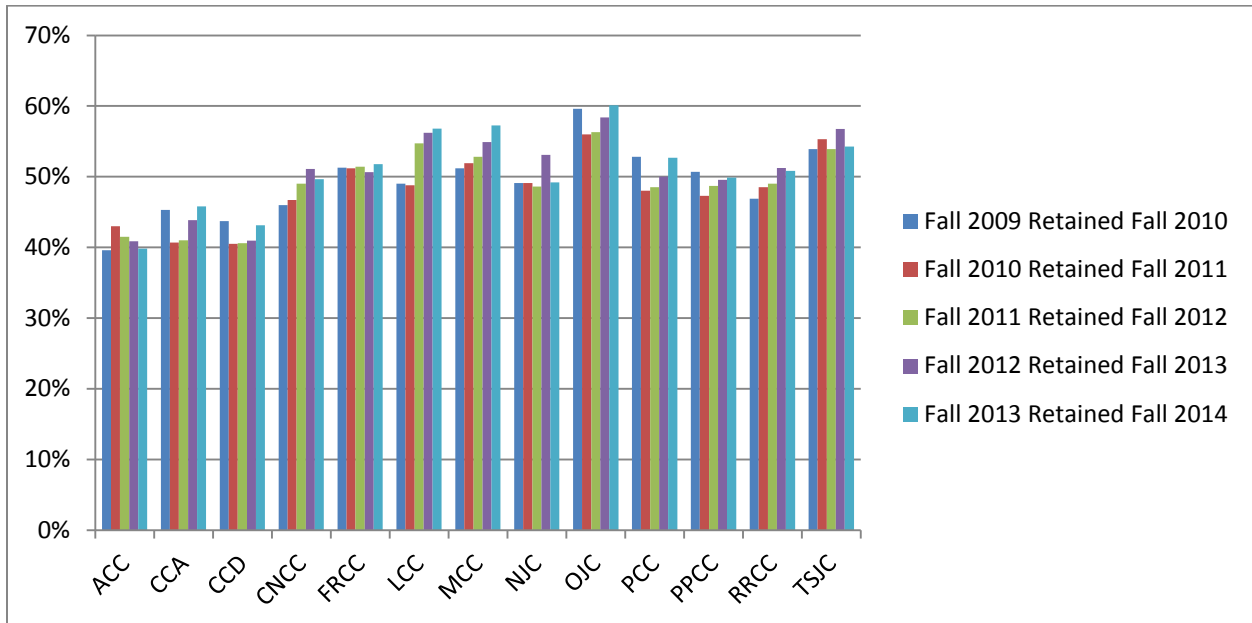


## Retention

### Fall-to-Fall Full- and Part-Time Retention Trends by College Fall 2010 to Fall 2014

College	Fall 2009 Retained Fall 2010	Fall 2010 Retained Fall 2011	Fall 2011 Retained Fall 2012	Fall 2012 Retained Fall 2013	Fall 2013 Retained Fall 2014
ACC	39.6%	43.0%	41.5%	40.9%	39.8%
CCA	45.3%	40.7%	41.0%	43.8%	45.8%
CCD	43.7%	40.5%	40.6%	41.0%	43.1%
CNCC	46.0%	46.7%	49.0%	51.1%	49.6%
FRCC	51.3%	51.2%	51.4%	50.7%	51.8%
LCC	49.0%	48.8%	54.7%	56.2%	56.8%
MCC	51.2%	51.9%	52.8%	54.9%	57.3%
NJC	49.1%	49.1%	48.6%	53.1%	49.2%
OJC	59.6%	56.0%	56.3%	58.4%	60.1%
PCC	52.8%	48.0%	48.5%	50.0%	52.7%
PPCC	50.7%	47.3%	48.7%	49.5%	49.9%
RRCC	46.9%	48.5%	49.0%	51.2%	50.8%
TSJC	53.9%	55.3%	53.9%	56.8%	54.3%
<b>CCCS Total</b>	<b>48.1%</b>	<b>46.9%</b>	<b>47.1%</b>	<b>47.8%</b>	<b>48.6%</b>

Note: Fall to fall retention of all students adjusted for graduations and awards.

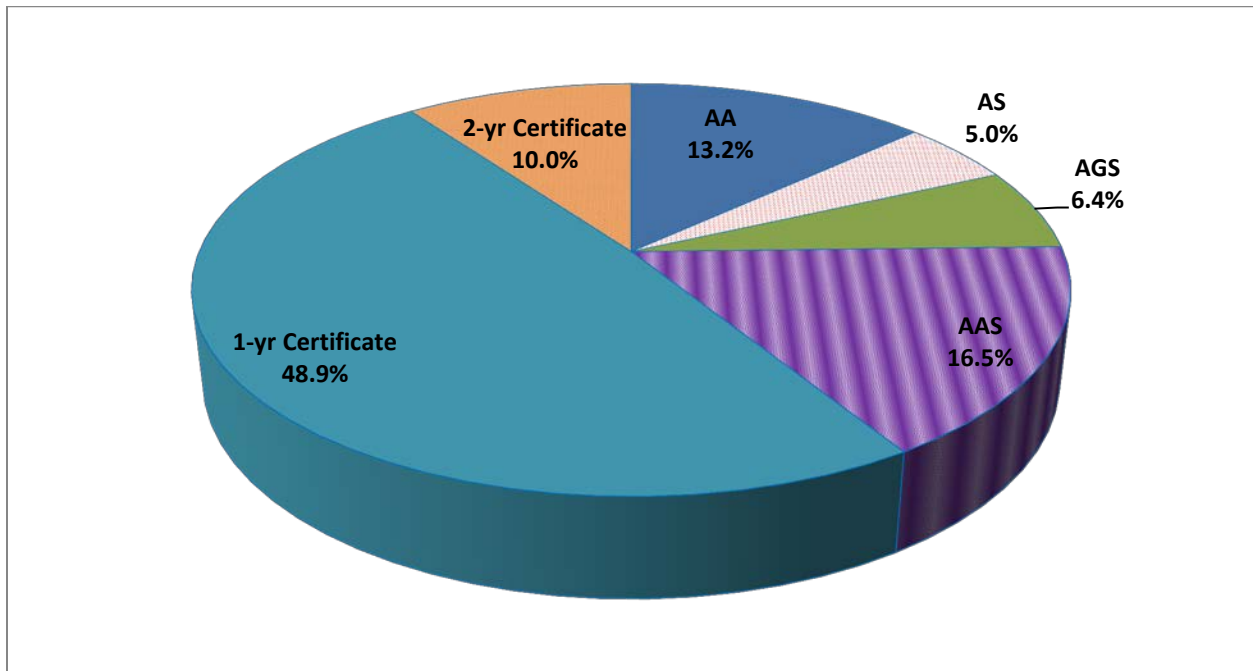


## Degrees

### Degrees Awarded by Type of Award: 2014-15

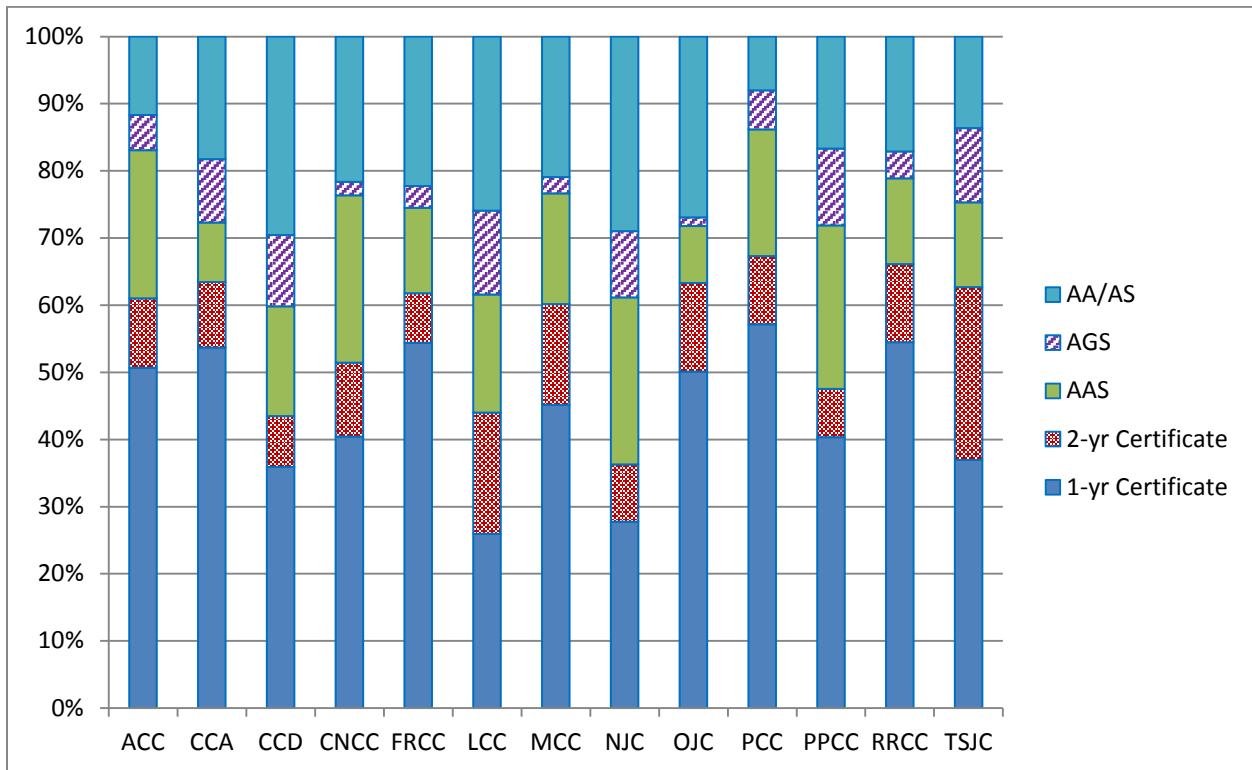
Degree Awarded	Number	Percent of Total	Change from AY 2013-2014	
			Number	Percent Change
AA	2,388	13.2%	18	0.8%
AS	897	5.0%	47	5.5%
AGS	1,162	6.4%	7	0.6%
AAS	2,978	16.5%	118	4.1%
1-yr Certificate	8,846	48.9%	733	9.0%
2-yr Certificate	1,803	10.0%	52	3.0%
<b>CCCS Total</b>	<b>18,074</b>	<b>100.0%</b>	<b>975</b>	<b>5.7%</b>

Generally, Associate of Arts (AA), Associate of Science (AS), and Associate of General Studies (AGS) degrees are transfer-oriented awards, while the Associate of Applied Science (AAS) degree is considered to be a professionally oriented terminal award.



### Degrees Awarded by College: 2014-15

College	1-Year Certificate	2-Year Certificate	AAS	AGS	AA	AS	Total Awards	% of CCCS Awards
ACC	50.6%	10.4%	22.0%	5.2%	8.8%	2.9%	1,801	10.0%
CCA	53.7%	9.7%	8.9%	9.4%	11.6%	6.7%	1,304	7.2%
CCD	35.9%	7.5%	16.4%	10.6%	18.3%	11.3%	1,100	6.1%
CNCC	40.4%	11.0%	24.9%	2.0%	14.7%	6.9%	245	1.4%
FRCC	54.4%	7.4%	12.7%	3.3%	17.0%	5.3%	4,522	25.0%
LCC	25.9%	18.1%	17.6%	12.5%	15.7%	10.2%	216	1.2%
MCC	45.2%	15.0%	16.5%	2.4%	15.9%	5.1%	454	2.5%
NJC	27.7%	8.5%	24.9%	9.8%	18.9%	10.1%	386	2.1%
OJC	50.1%	13.2%	8.5%	1.3%	16.1%	10.8%	471	2.6%
PCC	57.2%	10.1%	18.8%	5.8%	6.4%	1.6%	2,171	12.0%
PPCC	40.3%	7.2%	24.3%	11.5%	13.1%	3.6%	2,619	14.5%
RRCC	54.5%	11.7%	12.8%	4.0%	12.8%	4.4%	2,000	11.1%
TSJC	36.9%	25.7%	12.6%	11.1%	9.9%	3.7%	785	4.3%
<b>Total CCCS</b>	<b>48.9%</b>	<b>10.0%</b>	<b>16.5%</b>	<b>6.4%</b>	<b>13.2%</b>	<b>5.0%</b>	<b>18,074</b>	<b>100.0%</b>



### Top Degree Program by College: 2014-15

College	Program Name*	Number of Awards	% of College Awards
ACC	Child Care Provider/Assistant	186	12.4%
CCA	Cinematography and Film/Video Production	370	39.2%
CCD	Early Childhood Education and Teaching	126	19.1%
CNCC	Nursing Assistant/Aide and Patient Care Assistant/Aide	37	19.8%
FRCC	Welding Technology/Welder	404	12.0%
LCC	Registered Nursing/Registered Nurse	38	28.6%
MCC	Nursing Assistant/Aide and Patient Care Assistant/Aide	73	21.0%
NJC	Business Administration and Management, General	64	27.1%
OJC	Automobile/Automotive Mechanics Technology/Technician	64	18.9%
PCC	Business/Office Automation/Technology/Data Entry	353	18.9%
PPCC	Registered Nursing/Registered Nurse	516	27.4%
RRCC	Business Administration and Management, General	149	9.4%
TSJC	Nursing Assistant/Aide and Patient Care Assistant/Aide	103	17.4%

\* Excludes AA, AS, and AGS degrees

### Top Degree Programs for CCCS by Type of Degree: 2014-15

Program Name*	Number of Awards	% of CCCS Total
<b>AAS Degrees</b>		
Registered Nursing/Registered Nurse	531	17.8%
Accounting Technology/Technician and Bookkeeping	143	4.8%
Radiologic Technology/Science - Radiographer	96	3.2%
Automobile/Automotive Mechanics Technology/Technician	95	3.2%
Cooking and Related Culinary Arts, General	91	3.1%
Legal Assistant/Paralegal	91	3.1%
<b>Total of Top Five</b>	<b>1,047</b>	<b>35.2%</b>
<b>Two-Year Certificates</b>		
Criminal Justice/Police Science	226	12.5%
Early Childhood Education and Teaching	170	9.4%
Cosmetology/Cosmetologist, General	144	8.0%
Licensed Practical/Vocational Nurse Training	127	7.0%
Legal Assistant/Paralegal	110	6.1%
<b>Total of Top Five</b>	<b>777</b>	<b>43.1%</b>
<b>One-Year Certificates</b>		
Nursing Assistant/Aide and Patient Care Assistant/Aide	1,106	12.5%
Emergency Medical Technology/Technician (EMT Paramedic)	980	11.1%
Automobile/Automotive Mechanics Technology/Technician	550	6.2%
Welding Technology/Welder	544	6.1%
Business Administration and Management, General	516	5.8%
<b>Total of Top Five</b>	<b>3,696</b>	<b>41.8%</b>

\* Excludes AA, AS, and AGS degrees

**Degrees with Designation Awarded: 2012-13 through 2014-15**

<b>Degree with Designation*</b>	<b>2012-13</b>	<b>2013-14</b>	<b>2014-15</b>	<b>2014-15 % of Total</b>
Agricultural Business (AS)			3	0.4%
Animal Science (AS)		1	2	0.3%
Anthropology (AA)	4	7	11	1.5%
Business (AA)	352	344	339	46.1%
Communication (AA)			1	0.1%
Criminal Justice (AA)		12	52	7.1%
Early Childhood Education (AA)	45	36	41	5.6%
Economics (AA)	4	12	10	1.4%
Elementary Education (AA)	87	69	60	8.2%
Engineering (AS)**	9	6		0.0%
French (AA)	1	1	4	0.5%
History (AA)	36	28	29	3.9%
Mathematics (AS)	6	12	14	1.9%
Political Science (AA)	3	7	17	2.3%
Psychology (AA)	76	110	121	16.4%
Psychology (AS)	5	8	8	1.1%
Sociology (AA)	3	13	13	1.8%
Soil & Crop Science (AS)			1	0.1%
Spanish (AA)	1	13	10	1.4%
<b>Total</b>	<b>632</b>	<b>679</b>	<b>736</b>	<b>100.0%</b>

\*Includes degrees with designation and, in some years, statewide transfer agreements.

\*\*Engineering is no longer a statewide transfer agreement.



## Transfers

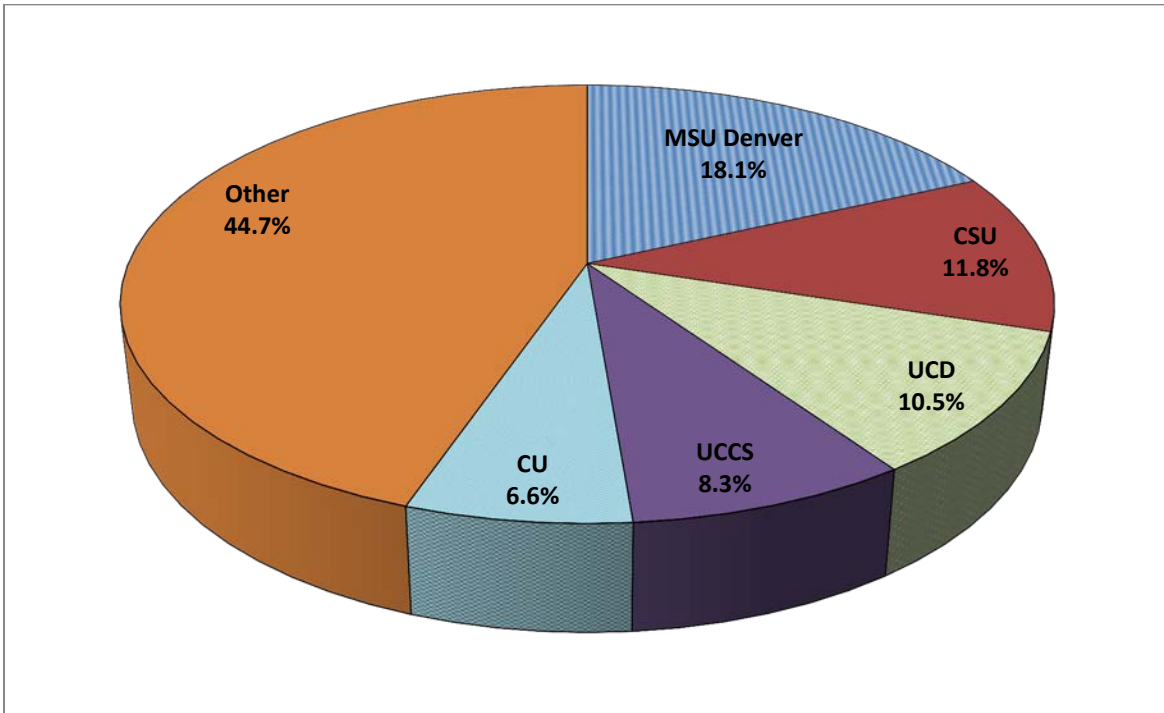
### Total Number of Student Transfers and Top Transfer Destinations Academic Years 2012-13 through 2014-15

College	2012-2013		2013-2014		2014-2015	
	Total Transfers to Four-Year Institutions	Top Transfer Destination	Total Transfers to Four-Year Institutions	Top Transfer Destination	Total Transfers to Four-Year Institutions	Top Transfer Destination
ACC	1,532	MSU Denver	1,496	MSU Denver	1,611	MSU Denver
CCA	965	MSU Denver	1,051	UCD	1,063	MSU Denver
CCD	2,050	MSU Denver	1,662	MSU Denver	1,566	MSU Denver
CNCC	172	CMU	186	CMU	180	CMU
FRCC	2,805	CSU - Ft Collins	2,704	CSU - Ft Collins	2,589	CSU - Ft Collins
LCC	120	CSU - Pueblo	143	UCCS	130	Adams State U
MCC	253	UNC	257	UNC	252	CSU - Ft Collins
NJC	267	CSU/UNC	248	UNC	272	CSU - Ft Collins
OJC	184	CSU - Pueblo	147	CSU - Pueblo	162	CSU - Pueblo
PCC	484	CSU - Pueblo	471	CSU - Pueblo	465	CSU - Pueblo
PPCC	1,444	UCCS	1,488	UCCS	1,524	UCCS
RRCC	1,053	MSU Denver	1,050	MSU Denver	984	MSU Denver
TSJC	195	Adams State U	242	Adams State U	251	Adams State U
<b>CCCS Total</b>	<b>11,524</b>	<b>MSU Denver</b>	<b>11,145</b>	<b>MSU Denver</b>	<b>11,049</b>	<b>MSU Denver</b>

\*Transfer data based on attendance at a four-year college – public or private – in the following fall, as reported by the National Student Clearinghouse (NSC). Not all institutions participate in the NSC.

**Top Five Four-Year Transfer Destinations  
From Fall 2014 to Fall 2015**

Transfer Destination	Transfers	% of Total Transfers to Four-Year Institutions
Metropolitan State University of Denver (MSU Denver)	2,007	18.1%
Colorado State University - Fort Collins (CSU)	1,311	11.8%
University of Colorado - Denver (UCD)	1,163	10.5%
University of Colorado - Colorado Springs (UCCS)	918	8.3%
University of Colorado - Boulder (CU)	730	6.6%
<b>Total of Top Five Destinations</b>	<b>6,129</b>	<b>55.3%</b>



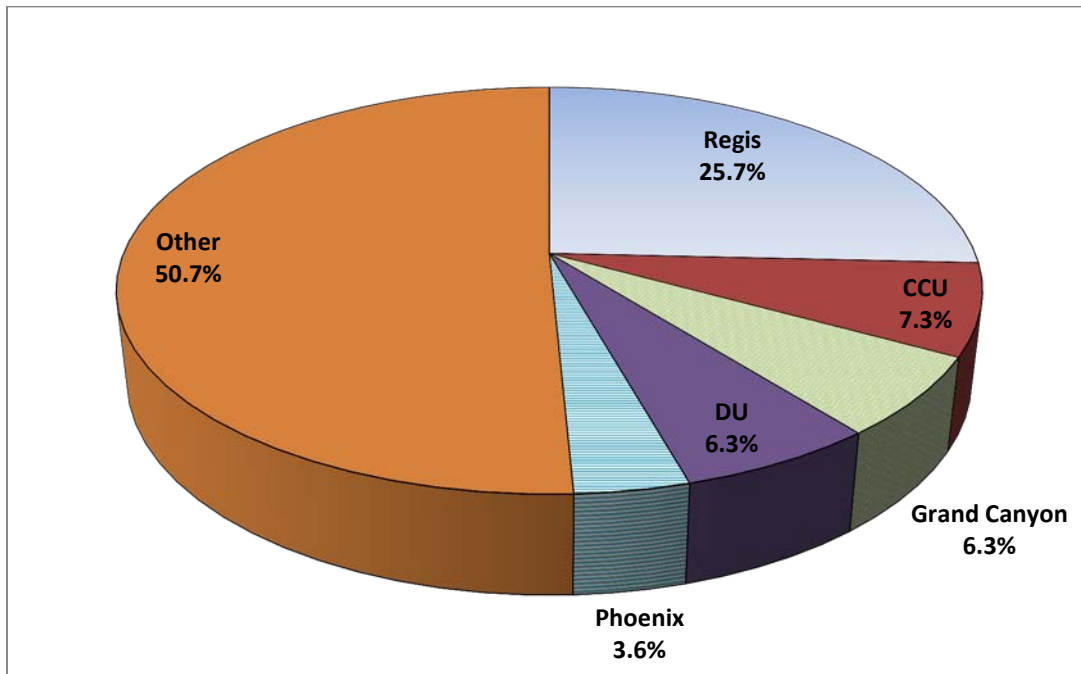
**Transfers to Colorado Four-Year Institutions: Fall 2014 to Fall 2015**

<b>College</b>	<b>Number of Transfers</b>	<b>Rank</b>
Adams State University	221	9
College America - Colorado Springs	3	26
College America - Denver	1	28
Colorado Christian University	136	12
Colorado College	7	22
Colorado Mesa University	218	10
Colorado Mountain College	96	14
Colorado School of Mines	215	11
Colorado State University - Fort Collins	1,311	2
Colorado State University - Global Campus	7	22
Colorado State University - Pueblo	472	8
Colorado Technical University	31	17
Colorado Technical University - Denver	10	21
Colorado Technical University - Online	24	19
Denver Seminary	2	27
Fort Lewis College	85	15
Iliff School of Theology	1	28
Johnson & Wales- Denver	30	18
Metropolitan State University of Denver	2,007	1
Naropa University	14	20
Regis University	482	7
Rocky Mountain College of Art & Design	7	22
The Art Institute of Colorado	5	25
University of Colorado - Boulder	730	5
University of Colorado - Colorado Springs	918	4
University of Colorado - Denver	1,163	3
University of Denver	118	13
University of Northern Colorado	548	6
Western State Colorado University	83	16
<b>Total Transfers to Colleges in Colorado*</b>	<b>8,945</b>	<b>N/A</b>

\*The total may not sum to the number of students transferring to a Colorado college because NSC may report multiple transfer colleges for an individual student. Colleges and universities enrolling about 98 percent of students in higher education institutions participate in the National Student Clearinghouse. In Colorado, the institutions with 1,000 or more students that do not report attendance and completion data to the Clearinghouse are American Sentinel University, Westwood College Denver North, Heritage College – Denver, and Concorde Career Institute – Denver.

**Top Five Four-Year Private Transfer Destinations  
From Fall 2014 to Fall 2015**

<b>Private Transfer Destination</b>	<b>Transfers</b>	<b>% of Total Transfers to Private Four-Year Institutions</b>
Regis University	482	25.7%
Colorado Christian University (CCU)	136	7.3%
Grand Canyon University	118	6.3%
University of Denver (DU)	118	6.3%
University of Phoenix	68	3.6%
<b>Total of Top Five Private Destinations</b>	<b>922</b>	<b>49.3%</b>
<b>Total Transfers to Four-Year Private Colleges</b>	<b>1,872</b>	<b>N/A</b>

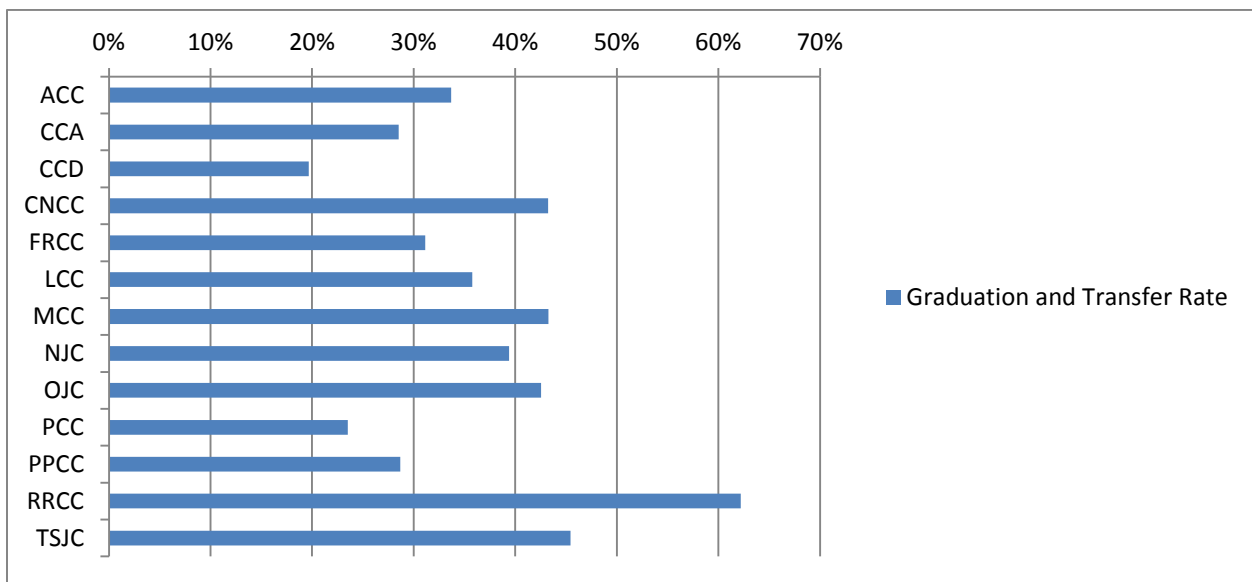


**Graduation and Graduation/Transfer Rates**  
**Three-Year Graduation and Transfer Rate**  
**First-time, Full-time, Degree/Certificate-seeking Students**  
**Fall 2011 Cohort Graduating in 2014**

College	2011 Cohort	Graduates	Graduation Rate	Transfers	Transfer Rate	Combined Graduation Transfer Rate
ACC	466	86	18.5%	71	15.2%	33.7%
CCA	452	83	18.4%	46	10.2%	28.5%
CCD	635	64	10.1%	61	9.6%	19.7%
CNCC	148	45	30.4%	19	12.8%	43.2%
FRCC	1,362	266	19.5%	158	11.6%	31.1%
LCC	151	49	32.5%	5	3.3%	35.8%
MCC	67	19	28.4%	10	14.9%	43.3%
NJC	401	119	29.7%	39	9.7%	39.4%
OJC	228	81	35.5%	16	7.0%	42.5%
PCC	459	89	19.4%	19	4.1%	23.5%
PPCC	1,154	139	12.0%	192	16.6%	28.7%
RRCC	648	170	26.2%	233	36.0%	62.2%
TSJC	297	120	40.4%	15	5.1%	45.5%
<b>CCCS Total</b>	<b>6,468</b>	<b>1,330</b>	<b>20.6%</b>	<b>884</b>	<b>13.7%</b>	<b>34.2%</b>

\* Three-year graduation rate refers to completion of program within 150 percent of normal time.

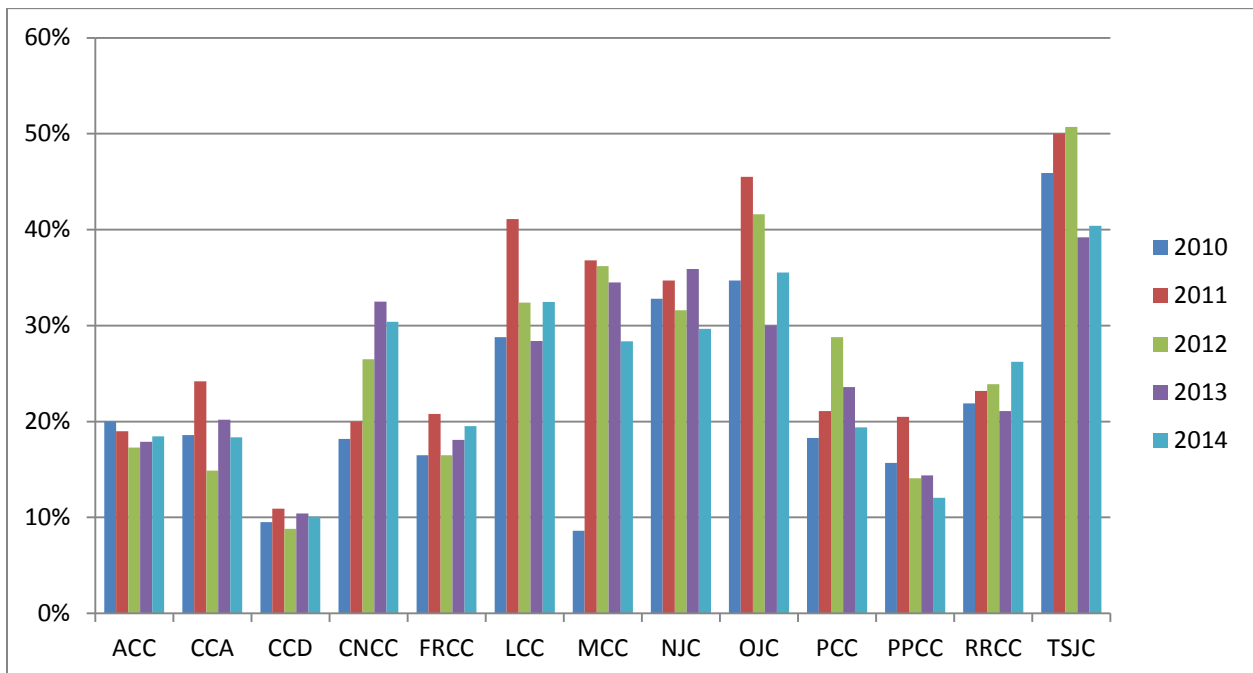
Source: IPEDS



**Three-Year Graduation Rate Trends**  
**Full-time, First-time, Degree/Certificate-seeking Students**  
**2007 Cohort through 2011 Cohort**

College	2007 Cohort Graduate by Summer 2010	2008 Cohort Graduate by Summer 2011	2009 Cohort Graduate by Summer 2012	2010 Cohort Graduate by Summer 2013	2011 Cohort Graduate by Summer 2014	2011 Cohort as % of Fall 2011 Headcount
ACC	20.0%	19.0%	17.3%	17.9%	18.5%	4.2%
CCA	18.6%	24.2%	14.9%	20.2%	18.4%	5.8%
CCD	9.5%	10.9%	8.8%	10.4%	10.1%	4.9%
CNCC	18.2%	20.0%	26.5%	32.5%	30.4%	11.4%
FRCC	16.5%	20.8%	16.5%	18.1%	19.5%	6.6%
LCC	28.8%	41.1%	32.4%	28.4%	32.5%	16.1%
MCC	8.6%	36.8%	36.2%	34.5%	28.4%	3.6%
NJC	32.8%	34.7%	31.6%	35.9%	29.7%	18.6%
OJC	34.7%	45.5%	41.6%	30.0%	35.5%	14.7%
PCC	18.3%	21.1%	28.8%	23.6%	19.4%	5.7%
PPCC	15.7%	20.5%	14.1%	14.4%	12.0%	7.8%
RRCC	21.9%	23.2%	23.9%	21.1%	26.2%	6.8%
TSJC	45.9%	50.0%	50.7%	39.2%	40.4%	16.2%
<b>CCCS</b>	<b>20.3%</b>	<b>24.6%</b>	<b>21.2%</b>	<b>20.4%</b>	<b>20.6%</b>	<b>6.8%</b>

Source: IPEDS

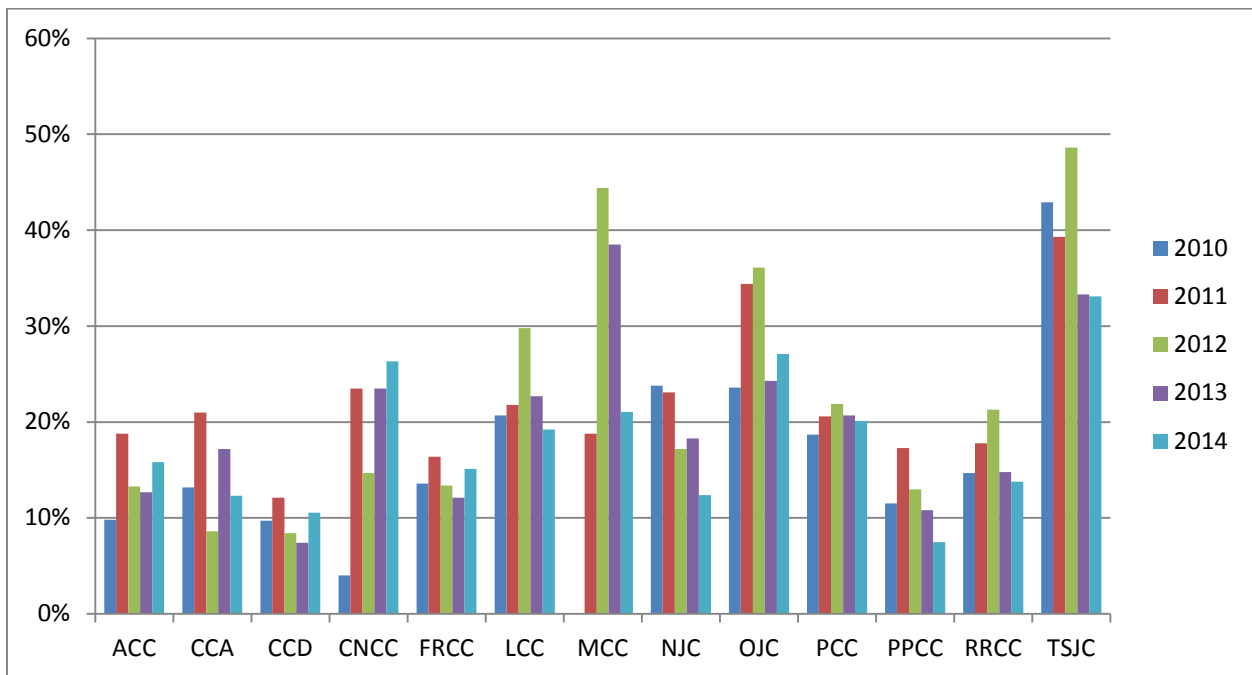


**Three-year Graduation Rate Trends: Minority Students  
2007 Cohort through 2011 Cohort**

College	2007 Cohort Graduate by Summer 2010	2008 Cohort Graduate by Summer 2011	2009 Cohort Graduate by Summer 2012	2010 Cohort Graduate by Summer 2013	2011 Cohort Graduate by Summer 2014
ACC	9.8%	18.8%	13.3%	12.7%	15.8%
CCA	13.2%	21.0%	8.6%	17.2%	12.3%
CCD	9.7%	12.1%	8.4%	7.4%	10.5%
CNCC	4.0%	23.5%	14.7%	23.5%	26.3%
FRCC	13.6%	16.4%	13.4%	12.1%	15.1%
LCC	20.7%	21.8%	29.8%	22.7%	19.2%
MCC	0.0%	18.8%	44.4%	38.5%	21.1%
NJC	23.8%	23.1%	17.2%	18.3%	12.4%
OJC	23.6%	34.4%	36.1%	24.3%	27.1%
PCC	18.7%	20.6%	21.9%	20.7%	20.1%
PPCC	11.5%	17.3%	13.0%	10.8%	7.5%
RRCC	14.7%	17.8%	21.3%	14.8%	13.8%
TSJC	42.9%	39.3%	48.6%	33.3%	33.1%
<b>CCCS Total</b>	<b>16.1%</b>	<b>20.4%</b>	<b>18.5%</b>	<b>15.3%</b>	<b>15.1%</b>

Source: IPEDS

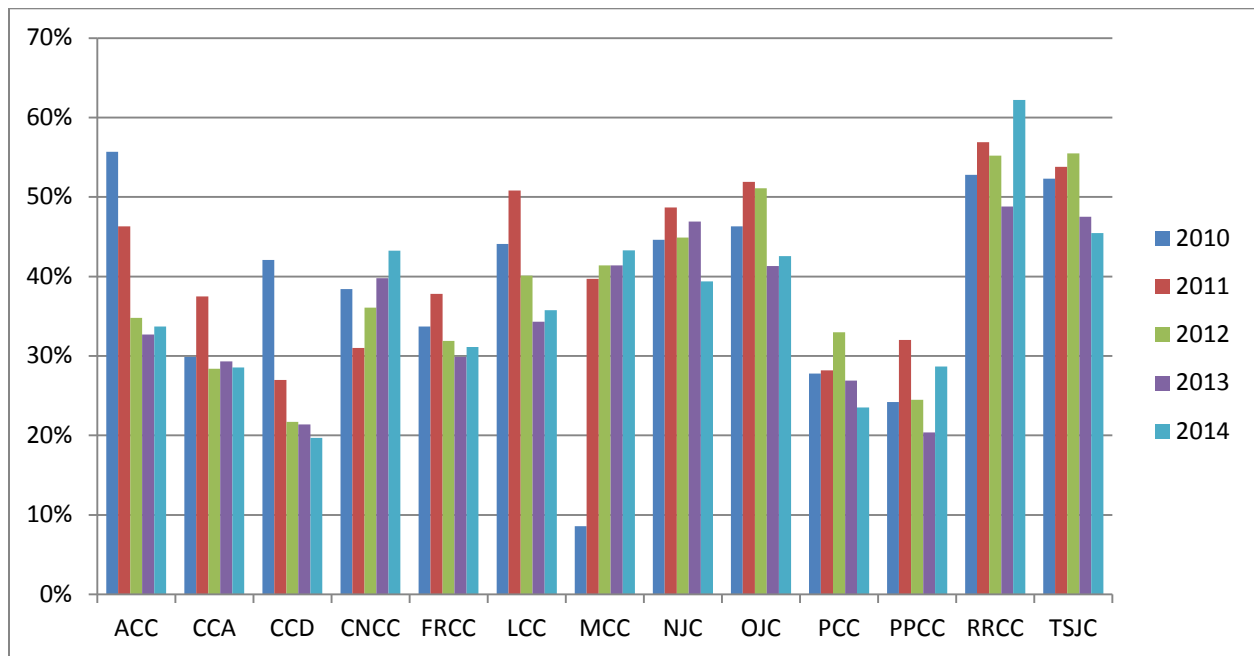
Minority students includes students who self report as American Indian or Alaska Native, Asian, Black or African American, Hispanic, or Native Hawaiian or Other Pacific Islander, or who report more than one race.



**Three-year Combined Graduation and Transfer Rate  
Fall 2007 Cohort through Fall 2011 Cohort**

College	Graduation and Transfer Rate 2010	Graduation and Transfer Rate 2011	Graduation and Transfer Rate 2012	Graduation and Transfer Rate 2013	Graduation and Transfer Rate 2014
ACC	55.7%	46.3%	34.8%	32.7%	33.7%
CCA	29.9%	37.5%	28.4%	29.3%	28.5%
CCD	42.1%	27.0%	21.7%	21.4%	19.7%
CNCC	38.4%	31.0%	36.1%	39.8%	43.2%
FRCC	33.7%	37.8%	31.9%	29.9%	31.1%
LCC	44.1%	50.8%	40.1%	34.3%	35.8%
MCC	8.6%	39.7%	41.4%	41.4%	43.3%
NJC	44.6%	48.7%	44.9%	46.9%	39.4%
OJC	46.3%	51.9%	51.1%	41.3%	42.5%
PCC	27.8%	28.2%	33.0%	26.9%	23.5%
PPCC	24.2%	32.0%	24.5%	20.4%	28.7%
RRCC	52.8%	56.9%	55.2%	48.8%	62.2%
TSJC	52.3%	53.8%	55.5%	47.5%	45.5%
<b>CCCS Total</b>	<b>37.4%</b>	<b>40.0%</b>	<b>35.0%</b>	<b>31.7%</b>	<b>34.2%</b>

Source: IPEDS



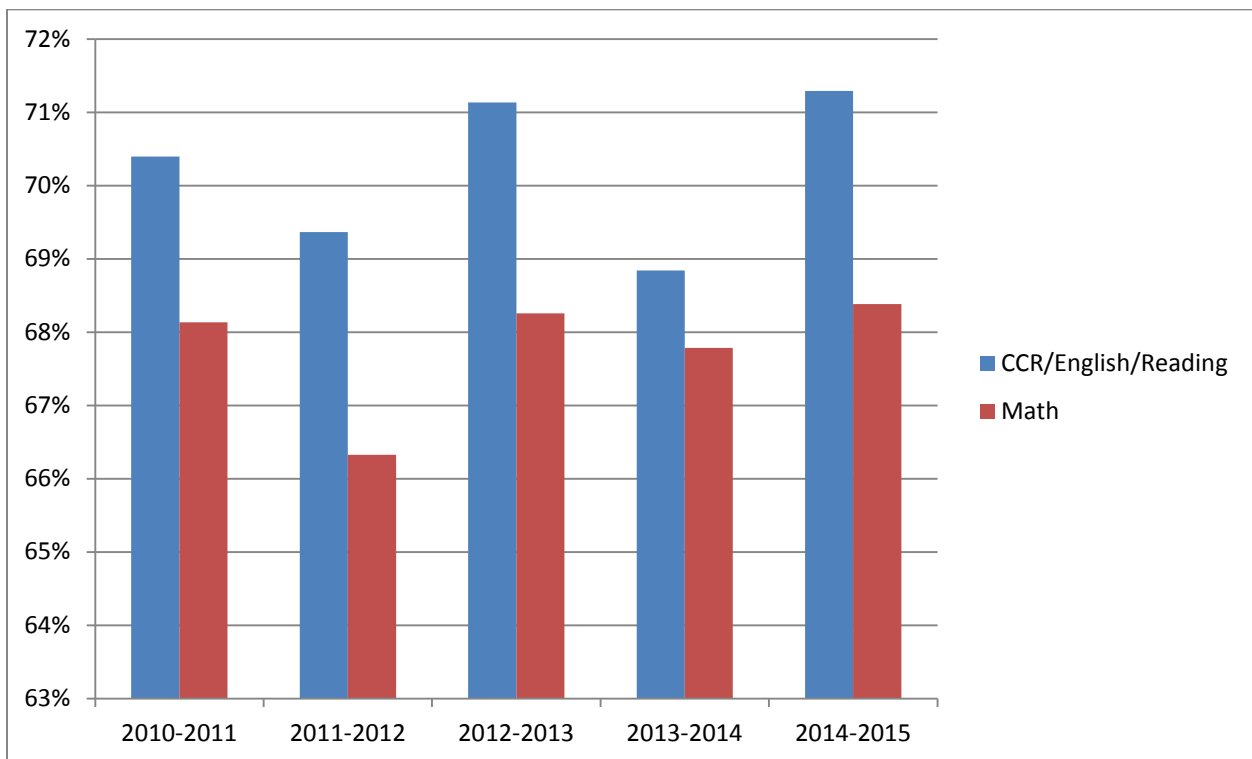


## Developmental Education

### Developmental Course Completion Rates by Subject Academic Years 2010-11 through 2014-15

Subject	2010-2011	2011-2012	2012-2013	2013-2014	2014-2015
CCR	n/a	n/a	n/a	62.0%	71.2%
English	70.1%	68.5%	70.7%	71.0%	n/a
Reading	71.0%	71.0%	72.0%	73.0%	n/a
CCR/English/Reading	70.4%	69.4%	71.1%	68.8%	71.3%
Math	68.1%	66.3%	68.3%	67.8%	68.4%
<b>CCCS Total</b>	<b>69.1%</b>	<b>67.6%</b>	<b>69.5%</b>	<b>68.2%</b>	<b>69.4%</b>

Note: Course completion is defined as receiving a passing grade — an A, B, C, or Satisfactory — at the end of the term. The cohort for determining the rates is the sum of the passing and failing grades. College composition and reading (CCR) was introduced in a limited fashion in 2013-14 and was scheduled to replace all reading English developmental courses in 2014-15, although a limited number of students continued to participate in these courses in 2014-15. These students have been rolled into the CCR line in 2014-15. In addition, a “CCR/English/Reading” line is provided to aid in the transition between the two systems in prior years.



**Developmental Education Course Completion Rates by College – All Subjects  
Academic Years 2010-11 through 2014-15**

<b>College</b>	<b>2010-2011</b>	<b>2011-2012</b>	<b>2012-2013</b>	<b>2013-2014</b>	<b>2014-2015</b>
ACC	76.5%	77.9%	79.0%	72.9%	71.4%
CCA	68.6%	69.0%	72.0%	66.7%	75.8%
CCD	65.0%	60.4%	63.6%	63.7%	66.7%
CNCC	78.6%	75.6%	75.8%	68.8%	83.3%
FRCC	73.4%	74.1%	73.1%	73.3%	72.4%
LCC	62.7%	62.1%	60.6%	70.5%	63.9%
MCC	85.4%	78.2%	72.3%	75.4%	71.2%
NJC	73.5%	68.4%	75.3%	70.2%	62.7%
OJC	69.8%	73.5%	78.8%	74.8%	75.0%
PCC	71.1%	70.2%	78.1%	76.9%	71.8%
PPCC	64.4%	63.6%	62.8%	64.9%	66.0%
RRCC	70.3%	68.4%	71.5%	65.4%	63.1%
TSJC	76.5%	78.6%	74.3%	69.8%	71.5%
<b>CCCS Total</b>	<b>69.1%</b>	<b>67.6%</b>	<b>69.5%</b>	<b>68.2%</b>	<b>69.4%</b>

Note: Course completion is defined as a passing grade -- an A, B, C, or Satisfactory -- at the end of term. The cohort for determining the rate is the number of passing and failing grades.

**Percent of Students Enrolled in Developmental Courses by College  
Academic Years 2010-11 through 2014-15**

<b>College</b>	<b>2010-2011</b>	<b>2011-2012</b>	<b>2012-2013</b>	<b>2013-2014</b>	<b>2014-2015</b>
ACC	17.0%	15.7%	15.1%	13.5%	10.3%
CCA	25.0%	24.8%	25.8%	21.5%	20.8%
CCD	53.1%	53.5%	50.1%	41.0%	36.0%
CNCC	13.9%	14.0%	14.2%	14.0%	13.7%
FRCC	25.6%	25.2%	24.2%	21.3%	17.8%
LCC	16.6%	14.9%	18.4%	13.8%	14.2%
MCC	12.4%	11.3%	11.2%	9.3%	7.5%
NJC	16.6%	19.4%	18.4%	17.7%	15.7%
OJC	23.6%	21.7%	21.5%	17.1%	19.0%
PCC	28.9%	27.6%	24.4%	19.0%	17.2%
PPCC	34.9%	34.8%	32.6%	30.7%	22.7%
RRCC	20.3%	20.9%	20.4%	19.2%	15.1%
TSJC	21.5%	23.1%	20.3%	15.9%	13.5%
<b>CCCS Total</b>	<b>28.5%</b>	<b>28.2%</b>	<b>26.6%</b>	<b>22.9%</b>	<b>19.3%</b>

**Percent of FTE Students Enrolled in Developmental Courses by College  
Academic Years 2010-11 through 2014-15**

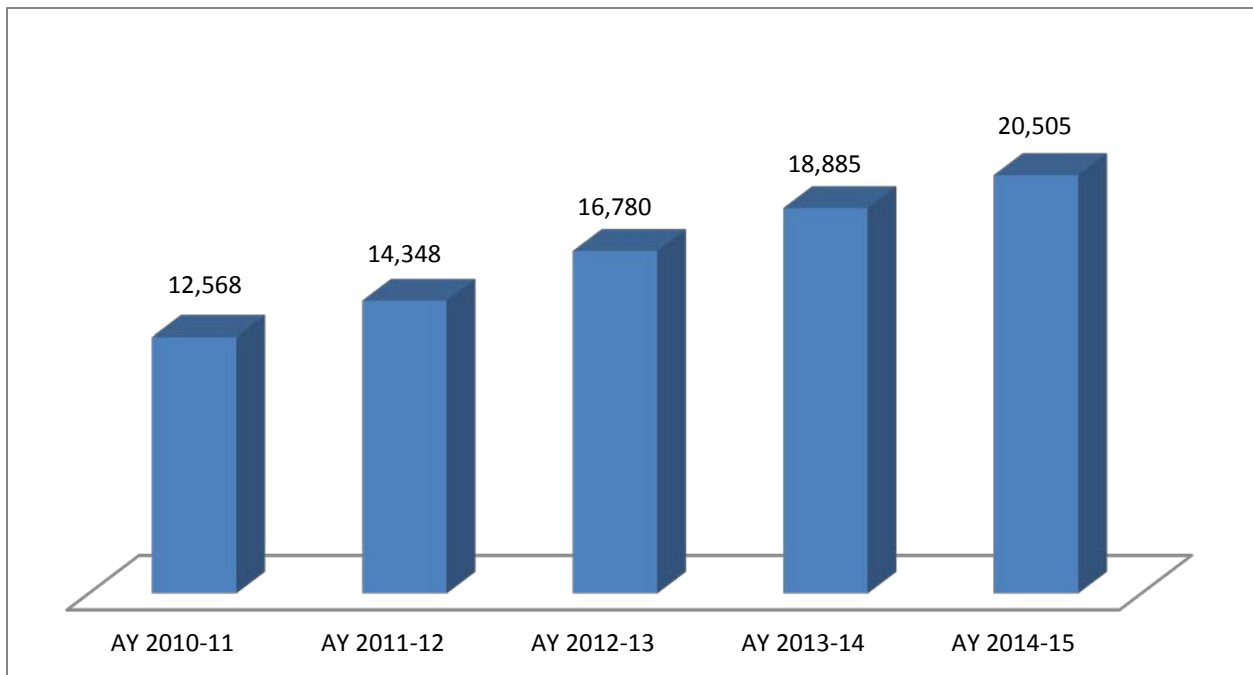
<b>College</b>	<b>2010-2011</b>	<b>2011-2012</b>	<b>2012-2013</b>	<b>2013-2014</b>	<b>2014-2015</b>
ACC	9.8%	10.3%	10.2%	8.9%	5.6%
CCA	11.7%	12.6%	17.3%	10.2%	7.1%
CCD	26.2%	26.8%	25.1%	19.4%	17.0%
CNCC	10.6%	19.2%	20.2%	7.0%	4.2%
FRCC	10.2%	10.4%	10.1%	8.9%	7.1%
LCC	6.4%	5.2%	5.6%	4.5%	4.3%
MCC	6.4%	5.6%	5.9%	4.2%	3.0%
NJC	9.5%	7.2%	8.8%	8.9%	6.5%
OJC	9.3%	8.7%	8.8%	6.4%	6.5%
PCC	16.1%	15.2%	14.3%	9.0%	8.0%
PPCC	14.9%	15.4%	14.4%	13.5%	8.5%
RRCC	8.5%	9.2%	8.9%	8.6%	6.3%
TSJC	7.0%	8.0%	8.1%	5.2%	4.6%
<b>CCCS Total</b>	<b>13.3%</b>	<b>13.6%</b>	<b>13.4%</b>	<b>10.7%</b>	<b>8.1%</b>

As reported to CDHE in the annual FTE submission

## Concurrent Enrollment

### High School Students Attending CCCS Colleges by College 2010-11 through 2014-15

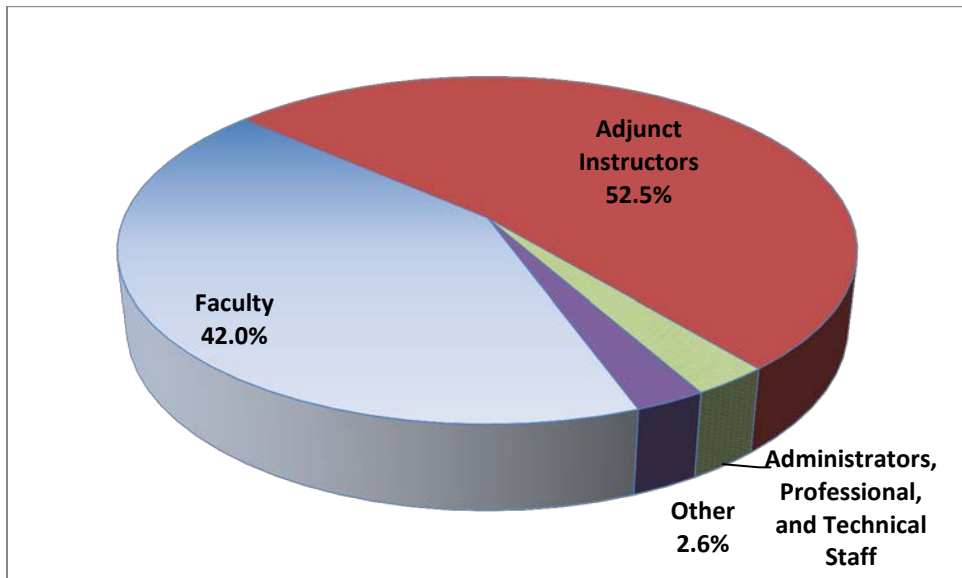
College	AY 2011 Count	AY 2011-12		AY 2012-13		AY 2013-14		AY 2014-15			Five-Year Change
		Count	% Chg	Count	% Chg	Count	% Chg	Count	% Chg	% of Total Enroll	
ACC	1,988	2,532	27.4%	2,964	17.1%	3,553	19.9%	3,579	0.7%	20.6%	80.0%
CCA	2,212	2,763	24.9%	3,002	8.7%	3,185	6.1%	3,222	1.2%	28.4%	45.7%
CCD	968	1,114	15.1%	1,554	39.5%	1,851	19.1%	2,418	30.6%	16.1%	149.8%
CNCC	424	394	-7.1%	409	3.8%	488	19.3%	501	2.7%	28.1%	18.2%
FRCC	1,119	1,553	38.8%	2,206	42.0%	2,583	17.1%	3,149	21.9%	11.3%	181.4%
LCC	396	400	1.0%	411	2.8%	387	-5.8%	378	-2.3%	36.3%	-4.5%
MCC	750	746	-0.5%	750	0.5%	856	14.1%	803	-6.2%	33.4%	7.1%
NJC	367	353	-3.8%	418	18.4%	388	-7.2%	403	3.9%	15.1%	9.8%
OJC	554	481	-13.2%	516	7.3%	584	13.2%	567	-2.9%	27.8%	2.3%
PCC	1,068	1,204	12.7%	1,154	-4.2%	1,210	4.9%	1,245	2.9%	12.5%	16.6%
PPCC	1,432	1,363	-4.8%	1,797	31.8%	1,749	-2.7%	2,017	15.3%	10.1%	40.9%
RRCC	909	1,115	22.7%	1,198	7.4%	1,491	24.5%	1,527	2.4%	11.8%	68.0%
TSJC	381	330	-13.4%	401	21.5%	560	39.7%	696	24.3%	28.0%	82.7%
<b>CCCS</b>	<b>12,568</b>	<b>14,348</b>	<b>14.2%</b>	<b>16,780</b>	<b>17.0%</b>	<b>18,885</b>	<b>12.5%</b>	<b>20,505</b>	<b>8.6%</b>	<b>16.2%</b>	<b>63.2%</b>



## Faculty

**Proportion of Credit Hours Taught by Staff Classification: 2014-15**

College	Faculty	Adjunct Instructors	Administrators, Professional, and Technical Staff	Other
ACC	40.2%	54.3%	3.2%	2.4%
CCA	21.3%	73.8%	4.4%	0.4%
CCD	36.4%	59.8%	1.8%	2.0%
CNCC	70.3%	15.1%	2.5%	12.0%
FRCC	37.9%	60.0%	0.7%	1.3%
LCC	51.3%	34.5%	7.0%	7.1%
MCC	47.3%	45.3%	1.4%	5.9%
NJC	74.3%	11.5%	6.8%	7.3%
OJC	67.9%	10.2%	11.1%	10.8%
PCC	47.0%	46.9%	3.7%	2.4%
PPCC	44.0%	52.6%	1.9%	1.5%
RRCC	32.3%	61.2%	3.0%	3.5%
TSJC	56.6%	32.2%	8.9%	2.3%
<b>CCCS Total</b>	<b>42.0%</b>	<b>52.5%</b>	<b>2.9%</b>	<b>2.6%</b>



## Glossary of Terms

**American Indian or Alaskan Native:** A person having origins in any of the original peoples of North America and who maintains cultural identification through tribal affiliation or community recognition.

**Asian or Pacific Islander:** A person having origins in any of the original peoples of the Far East, Southeast Asia, the Indian Subcontinent, or the Pacific Islands. This area includes, for example, China, Japan, Korea, the Philippine Islands, and Samoa.

**Associate Degree:** Normally requires at least two but less than four years of full-time equivalent college work. Associate of Arts (AA), Associate of Science (AS), and Associate of General Studies (AGS) degrees are transfer-oriented awards, while Associate of Applied Science (AAS) degrees are considered professionally oriented, terminal awards.

**Black, non-Hispanic:** A person having origins in any of the black racial groups of Africa (except those of Hispanic origin).

**Certificate (at least one but less than two academic years):** Requires completion of a program that would be completed in at least one but less than two full-time equivalent academic years, or designed for completion at least 30 but less than 60 credit hours, or in at least 900 but less than 1,800 contact hours.

**Certificate (less than one year):** Requires completion of a program that would be completed in less than one academic year or less than 900 contact hours by a student enrolled full time.

**Continuing:** A student who was enrolled previously at the institution at the current level, including readmitted students, but excluding students considered new transfers, HS concurrent students, summer only students, or study abroad only students.

**Degree Level:** The level of degree/diploma/certificate conferred by the institution upon the student for the successful completion of a program.

**Degree-seeking Students:** Students enrolled in courses who are recognized by the institution as pursuing: 1) a degree, certificate, or other formal award conferred by a public institution and approved by CCHE, or 2) a degree, certificate, or other formal award conferred by a private institution.

**Degree with Designation:** Specific academic programs at the AA and AS degree levels that result in transfer of credits to public four-year institutions and student enrollment at such institutions with junior status, as long as course requirements are met.

**Developmental Courses:** Courses that focuses on the fundamental knowledge and skills in reading, writing and mathematics that individuals need to function productively in society.

**First-time:** A student attending post-secondary education for the first time after high school at the level enrolled, where level means undergraduate or graduate.

**Graduation Rate:** Data are collected on the number of students entering the institution as full-time, first-time, degree/certificate-seeking undergraduate students in a particular year (cohort),

by race/ethnicity and gender; the number completing their program within 150 percent of normal time to completion and the number that transfer to other institutions if transfer is part of the institution's mission.

**Hispanic:** A person of Mexican, Puerto Rican, Cuban, Central or South American, or other Spanish culture or origin, regardless of race.

**Integrated Postsecondary Education Data System (IPEDS):** a system of interrelated surveys conducted annually by the U.S. Department of Education's National Center for Education Statistics (NCES). IPEDS gathers information from every college, university, and technical and vocational institution that participates in federal student financial aid programs.

**Non-degree Seeking:** Enrolled in courses but does not have intentions of pursuing a formal degree or award.

**Non-resident Alien:** A person who is not a citizen or national of the United States and who is in this country on a temporary basis and does not have the right to remain indefinitely.

**Race/Ethnicity:** The group to which an individual appears to belong, identifies with, or is regarded in the community as belonging.

**Registration Status:** The student's status at the reporting institution.

**Student Level:** The level at which a student is classified during the term which is being reported, based upon the total credits obtained toward completion of a degree/certificate program.

**Transfer:** A student for whom this term is the student's first term at the institution at the current level, where level is undergraduate or graduate, and the student is known to have previously attended a postsecondary institution at the same level after high school.

**Two-year Program:** Enrollment is in a non-vocational, sub-baccalaureate program.

**Unclassified:** A student enrolled in a degree program but who cannot be classified by academic level (e.g., a transfer student whose credits have not been evaluated).

**Vocational Programs:** Enrollment is in an occupational-specific sub-baccalaureate program.

**White, non-Hispanic:** A person having origins in any of the original peoples of Europe, North Africa, or the Middle East (except those of Hispanic origin).

**Source:** Colorado Department of Higher Education and IPEDS.